



LAKE VIEWS

A publication of the Lake Beulah Protective & Improvement Association

Fall, 2020

PROPOSED HOTEL AT LINDEY'S

by Brian Bellew, LBPIA



IN THIS ISSUE

August was a busy month for the LBPIA in our efforts to preserve the cherished beauty and calm of Lake Beulah. One priority was to inform members and the public about the 68-unit four-story hotel proposed for W13040 Beach Road, the current site of Lindey's. The East Troy Planning Commission approved the hotel plan in July, but a critical vote was scheduled for August 17. That is when the Town Board would formally vote on the developer's conditional use permit application.

Our goal was to solicit feedback from members on the plan and advocate for them before the Town Board. In early August, the LBPIA created a simple survey on our website asking whether respondents approved or disapproved of the hotel. The LBPIA's Area Chairs worked hard delivering flyers, making phone calls, sending emails, and knocking on doors to encourage members to take the survey.

Response was swift and informative: nearly 450 members, or 95% of the respondents, voted overwhelmingly against the hotel. Among other things, they raised concerns about environmental risks from surface runoff and the hotel's septic system as well as increased pier and boat traffic. LBPIA President Tom VanDenBogart used this data to buttress the LBPIA's strong opposition to the hotel before town officials on August 17.

Nearly 20 local citizens also spoke against the hotel at the meeting. The lone voice in favor of the hotel was the developer's. The Town Board voted against the hotel that evening although the decision will now be reviewed by Walworth County.

continued, see Hotel Proposal, page 3

- Presidential Perspectives..... 2
- Close Call on the Lake..... 3
- Landmarks of Lake Beulah 4
- Should Trout be Stocked?..... 5
- Mukwonago River Interconnections 6
- Thank You from the Police Chief 7
- Historic Buildings of Lake Beulah 7
- Ice on the Lake 8
- Goose Poop 9
- Landmarks of Lake Beulah Answers 9
- Message from Lake Mgmt District 10
- Protect Lake Beulah Website 10
- Emergency Information 10
- LBPIA Clip & Save Information 11
 - Board of Directors
 - Area Chair Network
- Fall Annual Meeting 12

www.protectlakebeulah.org



Lake Beulah Protective and Improvement Association

Established 1894

Member, Wisconsin Association of Lakes

P.O. Box 153 East Troy, WI 53120

The Lake Beulah Protective and Improvement Association (LBPIA) is a member-based organization dedicated to preserving the quality of Lake Beulah's natural resources and sustaining its inviting environment. LBPIA is dependent on annual dues from its members for its funding. All who use and enjoy the lake are welcome as members.

Begun in 1894 as a collective effort of lake residents to address island dam issues, the LBPIA has a long history as an effective organization seeking to assure that the pristine quality of the lake remains for future generations.



Mission Statement
The Lake Beulah Protective and Improvement Association is dedicated to preserving the natural resources of Lake Beulah and to maintaining an inviting environment for all who use the lake.



By Tom VanDenBogart

As I prepare an overview talk sheet to update the Lake Beulah Management District (LBMD) later this week, I am amazed at how busy we the LBPIA have been as an organization this last year, even amidst a pandemic.

Last fall we were very pleased with the outcome of our 125th Anniversary festivities where over 175 friends of the lake attended for celebration, educational presentations and informational booths of topics and organizations promoting the health and well-being of Lake Beulah.

Unfortunately, the weather forced us to postpone planned pontoon boat tours last fall, but we were hoping to hold the event this year to promote the historical and environmental beauty of the lake through educational tours. But again, we needed to move the date of this event to 2021 due to COVID-19. We are waiting to see what the new year brings before setting the new date. Please stay tuned.

Our fish stocking program will however go on this September as it has for many years. This year we are excited to work with "Walleye's Unlimited" who will join us as their chosen location for releasing fish this year. It is a compliment to the cleanliness of our lake that we have been selected as a great environment for Walleye development. This in combination with the recent changes to the legal length from 15" to 18" has shown that we have spawning walleyes in our lake. The program is working.

This fall, we will in combination release 8,100 large fingering Walleye and 1,850 Small Mouth Bass into the lake. We THANK the WI DNR, Walleyes Unlimited, Triangle Sportsmen's Club, the LBMD, and many private donors for their continued support of this program. Due to the COVID-19 restrictions, this year we are unable to include grade school kids in our release program as an educational opportunity.

The LBPIA has continued to be an advocate on lake issues as well as day to day business through both Zoom and face to face meetings with safe distancing. I would

continued, see Presidential Perspectives page 3

Hotel Proposal, continued from page 1

LBPIA leaders are grateful that members and concerned citizens spoke up to challenge a plan that we fear would harm the health and future of Lake Beulah. Still, given the uncertainty of the review process by the County, our work to defeat the proposed hotel must continue.

LBPIA leaders have contacted Matt Weidensee of the Walworth County Land Use and Resource Management Department and learned that the developer has put down funds to appear before the Walworth County Zoning Committee on October 15 at the Walworth County Clerk's Office, 100 W. Walworth Street in Elkhorn, Room 114. The meeting is scheduled to start at 4:30 pm, but County leaders schedule each action to be heard at a certain time. On October 9, County leaders will publish an agenda which will indicate the time for each item to come before the committee to be heard. County leaders may start later than the time assigned on the agenda for specific items, but they will not start any sooner. This is important for those citizens who wish to arrive at the appointed time and not have to sit through the entire meeting. After that appearance, and if the developer is again denied on his plan, he has the right to appear before the full Walworth County Board on November 10. We strongly recommend

URGENT: LET YOUR VOICE AGAIN BE HEARD AT THE COUNTY LEVEL ON THE PLANNED HOTEL FOR LAKE BEULAH

Who:	The developer, the Walworth County Zoning Committee and concerned citizens
What:	County level review for the planned hotel
Where:	Walworth County Clerk's Office at 100 W. Walworth Street in Elkhorn, WI 53121, Room 114
When:	October 15 at 4:30 pm (see www.protectlakebeulah.org for a specific agenda time for the hotel matter)
Why:	The developer has paid a large sum to appear; concerned citizens are urged to attend and participate
How:	Check the above website for final details and plan to attend

that all interested citizens rally as before at the last East Troy Town Board meeting on this crucial matter and attend the County meeting on October 15.

As stewards of the lake now and for future generations, the LBPIA urges members to stay informed on this matter through our website for updated details and join us in advocating for the lake we love.

CLOSE CALL ON THE LAKE

Sometime in the mid-1960s, I was tooling around the lake off East Shore Road when I looked up to see a parachute above me. It was clear the jumper had been blown far off course and was going to land in the lake. When I reached him, he was struggling to unhook himself from the chute, which was quickly filling with water. I grabbed him and pulled him into my boat. We got the harness off and then pulled in the parachute. Wow was there a lot of water in that thing!

The dictionary defines a 'close call' as a bad situation that almost happened. Over the years Lake Beulah has seen many of those. Maybe you've seen one too. If so, send your submission (100 words or less) to the *Lake Views* editor at LakeBeulah.LakeViews.Editor@gmail.com

Presidential Perspectives continued from page 2

like to thank the board and the lake community for coming together quickly in opposition to the Lindy's Hotel Proposal. Please see the article by Brian Bellew in this newsletter for the specifics and next steps.

We also continue to set up and prepare \$1,000 grants for lake homeowners for shoreline plantings and other qualifying projects. If you are interested in one of these grants or want to learn more, please contact us through our website at ProtectLakeBeulah.org.

So, with so much going on, please join us for our annual fall membership meeting scheduled for September 26th at 9:00 AM at the East Troy Town Hall Park, in the pavilion. If weather is questionable, the meeting will be held in the Town Hall Garage next door to the Town Hall. Each year we host a guest speaker as part of the meeting. This year we will facilitate

an overview of the facts related to the Booth Lake Project to displace water from Booth Lake to a nearby creek and fen that drains into Lake Beulah and the rest of the Mukwonago watershed. The LBMD and LBPIA are working together to assure any solution is safe and not harmful to Lake Beulah.

Then through committee reports, we will update members on the many other aspects of our beautiful lake and the many things going on. We encourage you to come and bring your own lawn chair and face mask as we practice safe social distancing.

Note that we have no current changes to our board this coming year but several openings to fill next fall. If you are interested in a board position, please contact one of our board members.

Thank you for your continued support in protecting the health and well-being of Lake Beulah for this and future generations! It does take a village...

LANDMARKS OF LAKE BEULAH - WHERE IS SHOCK'S LANDING?

Ask anyone who knows Lake Beulah to point to the public launch, Camp Charles Allis, or Divine Word on a map and they can do it, but how about Gaskell's Bay, Stumpy Bay, or Brown's Point? How about 'The Bench'?

Over the years, many landmarks have been named, some descriptively, some otherwise. Each landmark helps in locating places on Lake Beulah.

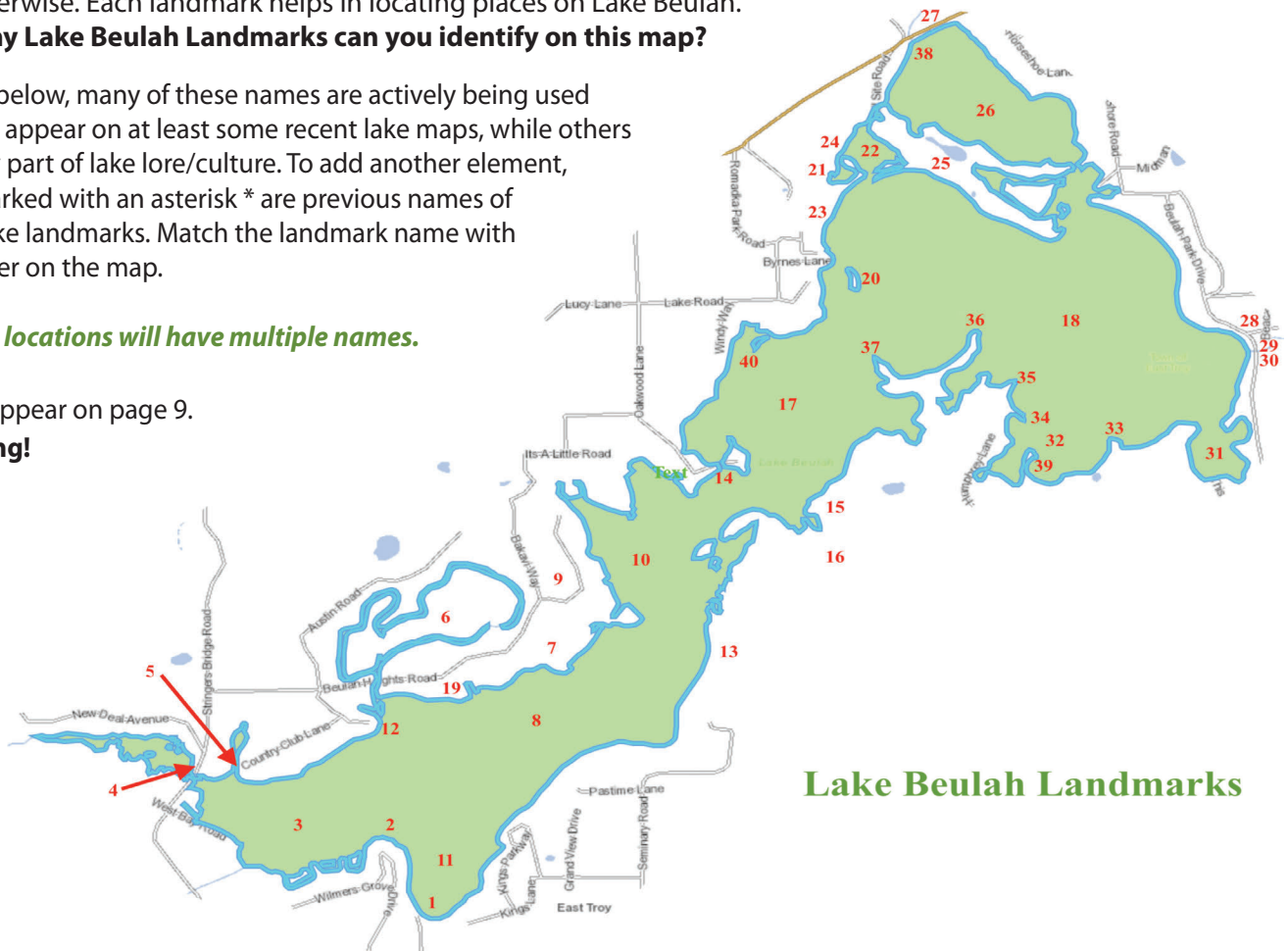
How many Lake Beulah Landmarks can you identify on this map?

In the list below, many of these names are actively being used today and appear on at least some recent lake maps, while others are simply part of lake lore/culture. To add another element, names marked with an asterisk * are previous names of current lake landmarks. Match the landmark name with the number on the map.

Tip: Some locations will have multiple names.

Answers appear on page 9.

No Peeking!



Lake Beulah Landmarks

ALPHABETICAL LIST OF LOCATIONS

- | | | | |
|-----------------------|-------------------------|------------------------|--------------------|
| Berganthall's Point | Camp Richards* | Lake Beulah Yacht Club | Peg's Supper Club* |
| Beulah Bait & Boat | Casey's Tap* | Lake House Inn* | Public Launch |
| Beulah Beach | Chamberlain Point* | Lancin's* | Round Lake |
| Beulah Bluff Preserve | Clayton's Point | Lindey's | Shock's Landing |
| Beulah Cove | Clifford's Supper Club* | Little Johnny B's* | Stumpy Bay |
| Beulah Island | Dam | Lee Shore* | Submerged Classic |
| Beulah Vista | Divine Word Seminary | Lower Lake | Claw-Foot Tub |
| Big Lake | Dorn Bay | Long Lake | Tarnowsky Point |
| Bnai Brith Beber Camp | Double D's | Lulabelle's Dockside | The Bench |
| Broad Bay | Fisher's Tap* | Marquette Island | Twin Islands |
| Brook's Bay | Fred's Tap | Middle Lake | Upper Beulah |
| Brook's Landing | Gaskell's Bay | Mill Lake | Weldon's Point |
| Brown's Point | Gillard's Point | Mill Pond | West Bay |
| Buck Island | Gillette/Jenks Point* | North Bay | Will's Point |
| Burr Oaks* | Goat Island | Osprey Platform | Wilmer's Landing |
| Camp Charles Allis | Hateley's Bay | Padua Point | |
| Camp Edwards | Jesuit Island | Parfait's Point* | |

SHOULD TROUT BE STOCKED IN THE LAKE?

Some folks love to fish while others have no interest. Either way, most everyone should realize fishing is a seriously important recreational activity on Lake Beulah. Moreover, a healthy, diverse fish population is a harbinger of the lake's overall health. With these things in mind, your LBPIA has always supported Wisconsin Department of Natural Resources efforts to foster a vibrant fishery.

Oftentimes, especially in the last 30 years, with DNR guidance, in partnership with others, the LBPIA has financed the stocking of northern pike, walleye and small mouth bass. The DNR also unilaterally stocks fish in Lake Beulah. Travis Motl, DNR Lake Beulah's new fisheries biologist tells me the DNR stocks walleye and northern pike on a biannual basis. Also stocked on an almost annual basis since 1973, are both rainbow and brown trout, the goal being to 'provide a unique angling opportunity.'

In the last decade the lake annually received around 4,000 yearling trout with an average size of 9.3 inches (that's 40,000 fish), but this spring, due to COVID-19 concerns around urban waters, nearly 13,000 were put in Lake Beulah.

Many years ago, when I first heard the DNR was stocking trout, I wondered why. Trout are not native to the lake and cannot reproduce there. I remember being told the trout were stocked so folks could catch them. Well, that was a good answer, but I wondered who was fishing for trout.



If you know how, you can catch trout at will.

Years ago (more than ten), I was acquainted with a really expert fisherman, someone with experience in all kinds of waters around the world. You know, kind of like one of those guys on the Saturday morning fishing shows. This guy would borrow my little fishing boat and he did a lot of motor trolling. (I seldom see folks doing that kind of fishing.)

If he just wanted to catch fish, he'd hit the deep waters off the public launch. Oftentimes he'd take a child, or someone else who's main goal was to catch fish. Here's the thing, he ALWAYS had success and the fish he caught in those deep holes were trout.

I went out with the guy a few times and was amazed by what he showed me. There were so many trout that they clouded the fish finder. HUGE schools! Anybody could catch them if they knew how to get down to their level, and he did.

Since those days I've asked many fishermen on the lake if they ever fish for trout. 100% the answer was 'no'. Ten or so years ago I told a fish biologist about that finding, and he told me 'all the trout were fished out of the lake'. I knew from personal experience it could not be true. I've never seen fishermen on the part of Lake Beulah where I personally located and caught fish 'at-will' while trolling the deep waters.

That brings me to this year and I asked Travis, our DNR fisheries biologist a few questions. Here are his answers.

1. How significant are stocked trout to the food supply of the natural fishery of the lake? *I don't believe the stocked trout are a significant food source for the native fishery. They inhabit a specific area of the lake. Northern pike and walleye may target them occasionally but I'm pretty confident in saying they don't sustain the fishery.*

2. What changes might we notice if the DNR stopped stocking trout in Lake Beulah? *It's hard to say for certain but I would guess you'd observe little to no change if DNR stops stocking trout. Adult rainbow trout eat primarily insects (aquatic and terrestrial), crustaceans, mollusks and some small fish. Their predators would primarily be northern pike and walleye. We've discontinued trout stocking on other inland lakes in the area with no issues.*

3. Would the WIDNR be willing to supplant trout stocking at Lake Beulah with other more relevant species? *Lake Beulah is currently stocked on a biannual basis with walleye and northern pike from our state hatcheries. Those are the only other relevant species available from our state hatcheries. For any species, the number of fish stocked is based on statewide guidance which suggests a stocking rate (# fish/lake acre). Full quotas are currently requested on schedule but the number of fish stocked may vary depending on actual hatchery production that year. So unfortunately just because we'd be stopping the trout stocking it doesn't mean we'd get a boost in stocking of other species.*

WHAT DO YOU THINK?

- Do you, or anyone you know fish for trout in Lake Beulah?
- Do you feel trout stocking should continue?
- When you fish, what are the top three species you're after?
Trout, Panfish, Bass, Northern, Walleye, Bullheads, Other

Please offer your opinion on this brief survey which was developed in partnership with the Triangle Sportsman's Club. <https://www.surveymonkey.com/r/FSQS7R8>

You can also get direct access to this survey through our protectlakebeulah.org webpage.

MUKWONAGO RIVER INTERCONNECTIONS AFFECT US ALL

The Booth Lake Water Diversion Proposal

by Jennifer Thorsch, Lake Beulah homeowner & Laurie Lawlor, Mukwonago River Initiative

The Mukwonago River watershed is composed of interconnected lakes, including Booth Lake, Pickerel Lake, and Lake Beulah as well as wetlands, fens (unique, biodiverse wetlands that rely on calcium-rich springs and groundwater) and Pickerel Creek (a small creek that flows into Lake Beulah). Endangered, threatened, and rare plant and animal species including starhead topminnows, wicket spike rush, kitten tails, and Lady's Slipper, to name just a few, live in the diverse and unique ecosystem that The Nature Conservancy (TNC) describes as a "very high-quality, sensitive wetland...in a natural area of statewide significance."

The Booth Lake Management District (BLMD) is proposing to construct a 580-foot, 16-inch diameter pipe underneath the Alice Chester Girl Scout Camp that will discharge at the camp's north end into a sedge meadow, fen, and Pickerel Creek. Booth Lake is a 118-acre seepage lake with a maximum depth of 24 feet, located southwest of Lake Beulah, with no inlet or outlet. A bowl-like ridge surrounds most of the lake. The majority of houses are located on the highest rim with yards that slope steeply to the shoreline. The BLMD is proposing to drain the excess water to reduce shoreline erosion, pier damage and restore the ability of lake homeowners to resume waterskiing on the lake, which has been banned because of a no-wake zone ruling. Heavier than normal rain events during the past several years have prompted the no-wake zone rules that are in place in part to lessen shoreline erosion from boat wave action.

In early August, staff from TNC visited the discharge site for the Booth Lake water diversion project to

have a better understanding of some of the proposal's potential impacts on the health of nearby wetlands, pristine fen, and Pickerel Creek, which ultimately empties into the rest of the watershed. The Mukwonago River is considered one of the most biodiverse streams in southeastern Wisconsin.

In an August 18, 2020 letter to the Booth Lake Management District Board, TNC states, *"The location of the proposed outlet of the diversion pipe is a diverse, high-quality sedge meadow and calcareous fen...with plant communities that are globally rare. It is also designated by SEWRPC and Walworth County as a natural area of statewide or greater significance (NA-1)." The TNC letter continues, "Even with the best engineering, diverting surface water from Booth Lake to this wetland would have significant consequences for the natural communities present...The health of this wetland depends on mineral rich, cold groundwater that seeps into the wetland. Diverting water will significantly change the temperature, chemistry and volume of the water in the wetland, and endanger a rare wetland community."*

After careful consideration of the factors involved, *"TNC would suggest this project not go forward as currently proposed."* A technical white paper is being written with the facts and our group hopes to suggest alternative solutions not bearing the environmental risks of the current plan.

Lake Beulah, a 812-acre spring-fed lake, with a maximum depth of 58 feet, has both an inlet and outlet. As such, Lake Beulah is an important part of this interconnected watershed, which will be receiving the excess water from the Booth Lake water diversion project. Many Lake Beulah residents are concerned about the potential impacts of the project to water quality, introduction of invasive species, both plants and animals, and increased water levels after storm events. The first step of any proposal is the completion of an Environmental Impact



Study by an independent expert to define the risks.

The goal will be to work with all parties involved to perform the proper analysis of any Booth Lake proposal. Currently a meeting is being set up with the Lake Beulah Management District, Lake Beulah Protective & Improvement Association, Booth Lake Management District and TNC to define the success criteria to ensure that the health of Lake Beulah and the watershed is protected. Given that responsible performance of the work required could take years, clearly there is much environmental work and analysis to be completed before any action on the Booth Lake proposal can be approved or executed.

Jennifer Thorsch, Ph.D., is the Director Emeritus of the Cheadle Center for Biodiversity and Ecological Restoration at the University of California, Santa Barbara



Don P. Jensen Sr.

May 12, 2020

Lake Beulah Protective and Improvement Association
Tom VanDenBogart, President
PO Box 153
East Troy, WI 53120-0153

Dear Mr. Tom VanDenBogart, President:

On behalf of all the members of the Town of East Troy Water Patrol, I would like to thank all the members of the Lake Beulah Protective and Improvement Association for the generous contribution toward the purchase of the FUJINON TECHNO-STABI 14X40 Image Stabilizing Binocular. The LBPIA's support is greatly appreciated.

Your support has rendered a dedicated service to this community, and in doing so, has established yourself an enviable and enduring reputation for preserving the rights and security of all citizens. Further, your support enables us to meet our Department Vision whereas our Township is a place where all can live safely and without fear, protected by a police department with the highest ethical and professional standards.

Your support, helps us meet that Vision. Again, thank you.

Regards,



Don P. Jensen Sr.
Chief of Police

HISTORIC BUILDINGS OF LAKE BEULAH

Lake Beulah today is surrounded by a structures new and old. While some of the newer homes will have historical interest in the future, there are some that are historically interesting today. This is the first installment in what could become a regular feature in *Lake Views*.

While native American settlements were known to exist in the area of the public boat launch and West Bay Road in the 1830s, my earliest photos of buildings on the lake are from the 1890s. But knowing the date on a photo only tells us the building was there at that time. Sometimes a little speculation can make for a better story.

The structure in this photo is the Boat House at Camp Charles Allis. It was erected on the site in 1911 as a place to keep the Camp's diesel launch. There's a real interesting story about the launch, but to stay focused... The shore of Lake Beulah is actually the second location of the Boat House. Originally, it stood somewhere in Milwaukee and was dismantled and brought to its present site via horse-drawn wagon.

How old does something have to be before it is torn down and replaced with something else? Using 1910 as the end of



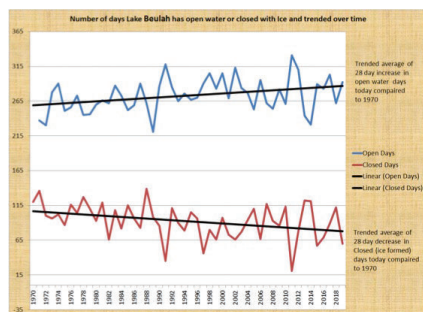
its first life, when might it have been built? This is when the speculating gets fun. Was it thirty years old? fifty? if it was fifty, then it predates the Civil War.

However old the Boat House is, it just looks right there doesn't it?! But then after 110 years in the same spot, it seems strange to think it was once somewhere else.

ICE ON THE LAKE

What Difference Does It Make?

In the spring issue of *Lake Views*, a graph of fifty years of data showed a clear trend with an average of almost one month less ice cover now than in 1970. Should we care? As promised, this article will attempt to explain why observed changes in ice cover could indicate a deleterious effect to the Lake Beulah ecosystem.



It turns out scientists have been studying this phenomenon in Wisconsin lakes for a long time so there is some pretty good information on what we can expect is already occurring in the lake. One thing we can already see is how fewer days of ice are impacting winter recreational activities on the lake. On one hand, the increased days of open water make for more days of boating and waterskiing by well-equipped early and late season skiers.

On the other hand, there is a smaller window for ice skating, cross-country skiing and ice fishing. Jeramie from Triangle Sportsman's Club reports that to insure safe ice they have had to move their annual ice fishing tournament to mid/late January... Also, ice fishermen who think they can leave their shanties on the ice until the mid-March deadline will have a rude awakening as the ice is either already gone, or far too thin to support any weight.

While the impact of less days of ice on Lake Beulah might just mean we need to adapt our people activities, the impact on the lake's ecosystem is more serious. Today, species of deeper inland lakes like Lake Beulah now face the challenge of depleted levels of dissolved oxygen in the bottom waters where they live.

To understand why this happens, you need to know the lake's bottom waters are naturally separated from the warmer top

waters by a process called 'thermal stratification'. Basically, this means the colder, denser water is beneath the warmer, less dense surface waters. Normally, seasonal changes in temperature trigger mixing of the thermal layers of the lake. This mixing redistributes oxygen to the deeper waters where oxygen has been depleted over time.

But, if we get a very warm, early spring it could quickly stratify the lake, and as a result the length of time the lake will be stratified during the open-water season would likely be longer than normal (same deal if the fall season remains very warm). As one expert I contacted explained, *'It's complicated!'*

The amount of oxygen present in the lower layer of the lake is limited. Think of it like a SCUBA tank - send a diver down for an hour with a tank of air and it's no problem. Give them the same tank and tell them to stay down for an extra day or two without getting any extra air, and now they have a problem. The same problem exists when all of the creatures/bacteria in a lake are consuming a limited supply of oxygen. If the available oxygen drops really low before the supply is rejuvenated from mixing, aquatic creatures start dying off.

In recent years, Lake Beulah has already lost a cold-water fish species, the Cisco. While the lake was once one of only a few in SE Wisconsin to



Ice fishing on Lake Beulah



harbor these up to 20" fish, we are now told by DNR fisheries experts that cold-water Cisco are no longer in the lake.

Conclusion

So should we care if the duration of ice cover on the lake continues to decline? I guess that might depend on our mindset about what is important. And then, can we do anything about it anyway? So is the best approach to just take the attitude, 'don't worry, be happy?' As always, your thoughts are welcome. Send them to LakeBeulah.LakeViews.Editor@gmail.com

Sources of information: WICCI Nelson Institute for Environmental Studies | Wisconsin Department of Natural Resources, Dr. Paul Skawinski, UW-Stevens Point



GOOSE POOP

This heron has found a nice place to perch and watch for food. Meanwhile it is also pooping all over the pier

Out on a boat ride with my grandson, I came on this swim raft rendered useless because birds made it their personal litter box. It doesn't take long for things to get out of hand; be it a swim raft, boat canvas, or a grassy shoreline. And the thing is, once the birds get in the habit it becomes increasingly difficult to deter them. Geese are the prime culprits, but seagulls and herons can also make a mess.

A single goose can consume as much as three pounds of grass per day and deposit a commensurate two pounds of droppings. Not only does this reduce the usefulness of your property, it also increases the nutrients running into Lake Beulah and polluting the water.

Lots of lake property owners have tried various things including

- Decoy animals - plastic predators like owls and snakes
- Reflective objects - mylar streamers near the water
- Noise makers - sound devices making predator noises
- Physical barriers - netting/string/rope across a stretch of shore

Generally speaking these methods have proved disappointing. While they at first may work, the birds soon become accustomed to them and quickly lose their fear. Physical barriers may work, but they also take a lot of work to maintain and the birds will find their weakest points.

Two effective options:

Liquid, natural bird repellents such as Flight Control Plus or Avian Migrate - Sprayed on lawn, they work by making the grass undesirable to eat. They are harmless to wildlife or people.

Shoreline plantings 20"-30" high have been shown to be the best long-term, the reason being the birds fear what lurks on the other side of the vegetation. There are even lake-friendly options which allow flexibility to plant native shrubs to fit a more manicured look.

ANSWERS TO LAKE BEULAH LANDMARKS

How did you do?

Report your score to LakeBeulah.LakeViews.Editor@gmail.com

1. Public Launch, Wilmer's Landing*, Shock's Landing*
2. Wilmer's Point
3. West Bay
4. Fred's Tap, Casey's Tap*, Beulah Bait & Boat
5. Suicide Bridge
6. Goat Island
7. Camp Charles Allis
8. Upper Beulah, Long Lake
9. Beulah Bluff Preserve
10. Round Lake, Stumpy Bay, Beulah Cove
11. Hateley's Bay
12. Weldon's Point
13. Divine Word Seminary, Camp Richards*
14. Twin Islands
15. Camp Edwards
16. Osprey platform
17. Round Lake, Middle Lake
18. Big Lake, Lower Lake
19. Gillard's Point
20. Buck Island
21. Brook's Landing*
22. Brook's Bay, North Bay
23. Beulah Beach*
24. Bnai Brith Beber Camp, Burr Oaks*
25. Beulah Island, Marquette Island*, Jesuit Island
26. Mill Lake, Mill Pond
27. Double D's, Beulah Vista*
28. Lindey's, Peg's Supper Club*, Clifford's Supper Club*, Lake House Inn*, Lancin's*, Lee Shore*, Little Johnny B's*
29. Lulabelle's Dockside, Fisher's Tap*
30. Lake Beulah Yacht Club
31. Gaskelles Bay, Dorn Bay
32. Broad Bay
33. Padua Point
34. Clayton's Point
35. Will's Point, Gillette/Jenks Point*
36. Brown's Point, Chamberlain Point*
37. Berganthall's Point, Parfait's Point*
38. Dam
39. Submerged Classic Cast Iron Claw-Foot Tub
40. The bench

A MESSAGE FROM THE LAKE MANAGEMENT DISTRICT



From the desk of...

DAVE BITTER, CHAIRMAN | LAKE BEULAH MGMT DISTRICT

I appreciate the opportunity to report on the activities of the Lake Beulah Management District. What a wonderful warm summer it has been. I hope everyone has had a chance to enjoy the lake, especially during the pandemic. This is the most active the lake has been in the 53 years I have been on Lake Beulah.

This has also been an active year for the Management District. We were made aware of lake residents concerned about changes in the East Troy Town governance and rightly so. There is no doubt that a good relationship between the town and the management district is vitally important. We expressed our concerns and the citizens voted. Change in itself is scary and after so many years it is doubly so. It will be imperative that all lake residents, voting or non-voting in local elections, watch with a close eye to monitor these changes.

Speaking of changes, it has been proposed to the District that we allow water from Booth Lake to be pumped into the Lake Beulah water shed were it would flow out over our dam. In the spirit of cooperation, the board has approved conditional approval of the concept. Let me make it perfectly clear, this is **CONDITIONAL**. It was issued so that the Booth Lake Management District be able to start the process of applying for a permit from the DNR. It was also done with the specific statement that **NO HARM SHALL COME TO LAKE BEULAH**. Many things have to be done not the least of which is a detailed engineering plan that can then be thoroughly reviewed. The Board of the management district will not approve of any plan that does **ANY HARM TO LAKE BEULAH**. All concerns will be reviewed. No operating agreement or permission will be granted until it has been proven to the District that no harm will come to the lake or its watershed.

On other matters we are finishing up with the aquatic plant harvesting and starting the process of shut down so we can be prepared for another great summer season on Lake Beulah.

At the time of this writing we are also preparing for our annual meeting on Sept 1. If you did not attend this year's meeting, I hope you will make plans for next year.

Emergencies

Please use courtesy and common sense in operating your watercraft, ATV's, snowmobiles. Avoid creating a hazard, threat, stress, or irritant to others and yourself, to wildlife and to the lake environment. Respect others by turning down the volume of music or other amplification.

You can report situations to the Town of East Troy Police on the lake or call their non-emergency number: **(262) 642-3700**.

For all EMERGENCIES: DIAL 911
Identify LAKE BEULAH and ACCESS POINT (see map)

Try to provide the police with as much information as possible such as boat type, color, number of occupants, location where observed, and registration number. Note: when on the lake the Police also monitor the emergency Marine Channel **VHF CH72**.

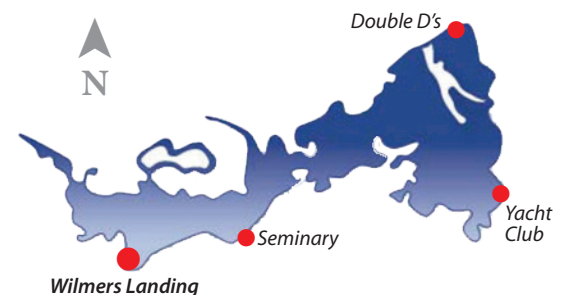
PROTECT LAKE BEULAH WEBSITE



ProtectLakeBeulah.org is a timely and effective way to communicate important information to you, the LBPIA membership. Here, you'll find...

- Numerous galleries of great photos
- All kinds of info on the lake and its natural environment
- Lake regulations
- News and important issues
- How to connect with the LBPIA

Give it a try. We're sure you'll be back soon.



Board of Directors

Area Chair Network

Serving on a voluntary basis, the Board of Directors are elected by the LBPIA membership. Board terms are three years; board members can serve a maximum of three terms (nine years).

Tom VanDenBogart	President / Fish, Game & Wildlife
Carol Stein	Vice President
Steve Huening	Treasurer
Steve Schmitendorf	Membership, Communications & Area Chair Network
Keith Beren	Water Quality
Jim Blomberg	Website
Alyssa Klopatek	Secretary / Web
Brian Bellew	Marketing
Tom Bernhardt	Lake Views Newsletter Editor
John Sonderegger	Past President

Area Chairpersons are committed Lake Beulah residents who serve as the primary contacts to the Association. They are your friends and neighbors, familiar faces who understand the issues surrounding your community. Should you have an interest or concern regarding the lake, please reach out to your area chair or a member of the board through ProtectLakeBeulah.org. Check (✓) YOUR Area Chairperson:

- Beach Rd & Deerpath Rd
Debra Dunn
- Beulah Heights Rd (W2002W1900) & Bavaki Way
Rob Hudson de Tarnowsky
- Beulah Heights Rd (up to W2002)
Richard Stenglein
- Beulah Park Rd
Dave & Peggy Krueger
- Byrnes Ln & Romadka Park Rd
Roy Gerloff
- Country Club Ln & Austin Rd
Steve & Mary Schmitendorf
- County Road J
Don Tacke
- East Shore Rd (Beach Rd to North end of Beulah Park Rd)
Debra Dunn
- East Shore Rd & Thistle Ln
Greg and Pat Thomas
- Horseshoe Ln & East Shore Rd (to Beulah Park Rd)
Chris Mackey & Karen Peters
- Island Drive
Kim Rosenmayer
- Kings Pkwy & Kings Ln
John & Bea Sonderegger
- Lake Rd & Windy Way
John & Susan Brown
- Marsh Rd & Millsite Rd
Don Tacke
- Oakwood Ln & Its A Little Rd
Don Stein
- Pastime Ln & Grandview Dr
Open: Volunteer needed
- South Shore Dr (up to Humphrey Ln)
Norm & Rose Sass
- Southshore Dr (west of and including Humphrey Ln
to Beulah Park Rd)
Carrie Franzene
- Stringers Bridge Rd, New Deal Ave & West Bay Rd
Michol Ford
- Wilmer's Grove Rd, Wilmers Point Ln & Wilmers Landing
Val Johnson

Lake Views is published periodically by the Lake Beulah Protective & Improvement Association. Every effort has been made to provide correct and accurate information. There is, however, no guarantee as to the total accuracy of information included. The opinions expressed are not necessarily those of the LBPIA Board of Directors. Individuals who wish to submit articles, artwork, poetry, calendar items or photography may send contributions to **LakeBeulah.LakeViews.Editor@gmail.com**. Articles in Lake Views may be reprinted or reproduced for further distribution, with acknowledgment to the Editor.



Lake Beulah
Protective and Improvement Association
Established 1894
 P.O. Box 153 East Troy, WI 53120

FIRST-CLASS MAIL
 U.S. POSTAGE
 PAID
 MILWAUKEE, WI
 PERMIT NO. 3707

Return Service Requested



Follow Us on Facebook and Instagram

OUR ORGANIZATION FINDS STRENGTH IN ITS MEMBERS.



YES! We will meet. There is too much going on around the lake to skip this!

SATURDAY, SEPT 26TH, 2020
@ 9:00 AM
FALL ANNUAL MEETING

Pavilion in the park adjacent to the East Troy Town Hall
 (In the case of bad weather we'll meet in the garage next to the Town Hall)

WHAT DO YOU WANT TO KNOW MORE ABOUT?

- Hotel
- Water from Booth Lake
- Water quality
- Fishing
- Boating

BYO lawn chair, coffee and donuts. (Sorry)

