



LAKE VIEWS

A publication of the Lake Beulah Protective & Improvement Association

Spring, 2020

ICE - A 50 YEAR SNAPSHOT OF LAKE BEULAH HISTORY

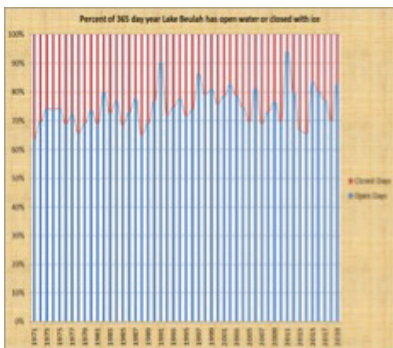
For the last fifty years, from her home on Country Club Lane, Ann Alger has been watching the weather and keeping track of ice formation and melting on Lake Beulah. When asked how this data collecting started she replied,

My mother would say, "Remember last year when we were wearing sweatshirts on the Fourth of July?" And I didn't remember it that way at all! So I decided that I would keep a weather journal which I have done now for 50 years. There is never any question now about previous temperatures, rainfall, snow totals, etc.

Ann's method was simple and straightforward. When the lake as viewed from her place was entirely covered with ice, she called it 'closed'. When there was no ice visible she called it 'open water'.

Until now all those records were just part of a long list of dates that included when the ice formed and when it broke up. But today, thanks to the power of modern technology and the efforts of Dan Roepke from Camp Charles Allis, that data is no longer just a list of dates, but a story of the Lake and its history.

A graph is a picture of numbers and it has been said that, 'A picture is worth a thousand words'. So let's take a look at Ann's data...



This is a graph of all fifty years of Ann's data. The red shows the percentage of days the lake was ice covered. Blue shows percentage of days of open water for each of the last fifty years. There are a few interesting things here. For example it shows 1971 had the greatest percentage of days of ice cover. But this graph is not the only way to look at Ann's data.

continued, see ICE, page 3



IN THIS ISSUE

- Presidential Perspectives 2
- Bald Eagles on Lake Beulah..... 3
- Spring at Beulah Bluff..... 4
- Is Water Quality Score a Red Flag? 4
- Water Quality Report 5
- Membership Information 6
- Community Center Opens 6
- Message from the Police Chief 7
- Fireworks on the Lake..... 8-9
- Memories of First Sighting 9
- Survey Results..... 9
- Lake Management District..... 10
- Fish Stocking Plans 10
- Emergency Information 10
- LBPIA Clip & Save Information 11
 - Board of Directors
 - Area Chair Network
- LBPIA Member Notes 12
- Welcome Travis Motl 12

www.protectlakebeulah.org



Lake Beulah Protective and Improvement Association

Established 1894

Member, Wisconsin Association of Lakes

P.O. Box 153 East Troy, WI 53120

The Lake Beulah Protective and Improvement Association (LBPIA) is a member-based organization dedicated to preserving the quality of Lake Beulah's natural resources and sustaining its inviting environment. LBPIA is dependent on annual dues from its members for its funding. All who use and enjoy the lake are welcome as members.

Begun in 1894 as a collective effort of lake residents to address island dam issues, the LBPIA has a long history as an effective organization seeking to assure that the pristine quality of the lake remains for future generations.



Mission Statement

The Lake Beulah Protective and Improvement Association is dedicated to preserving the natural resources of Lake Beulah and to maintaining an inviting environment for all who use the lake.



By Tom VanDenBogart

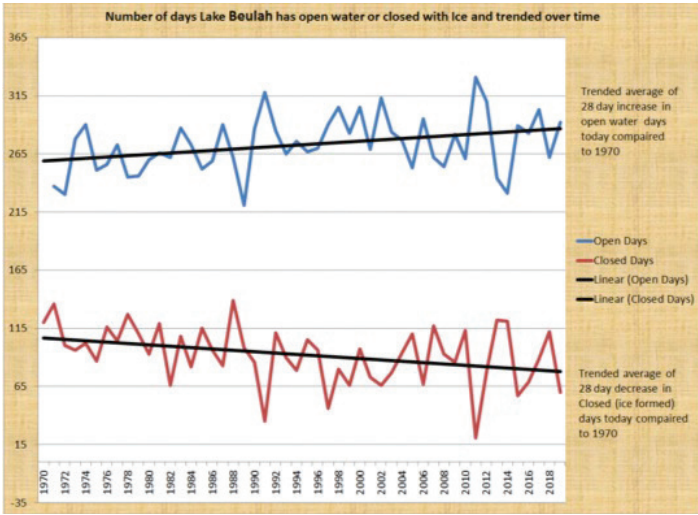
In this crazy time of change, rest assured the board of directors remains committed to the LBPIA mission. I am proud to say we continue to conduct business in a safe manner; carrying on with the publication of the newsletter, assuring this year's fish stocking program happens, and continuing the many other contributions this board makes on behalf of Lake Beulah and you. Having said this, the board places top priority on the health and safety of our members. **Hence, the date of the spring meeting has been pushed back to Saturday June 27th from 8:30 – 11:00 at the East Troy Town Hall. If further changes are necessary, we will contact our members using our email tools.** (Please be sure we have your correct email address. Changes can be made right on the home page at ProtectLakeBeulah.org.)

I want to thank everyone who attended and participated in our 125th Celebration event held this last fall. A DNR representative attending the event expressed how wonderful the event was, a real demonstration of how our lake community comes together showing we truly care about the wonderful resource we have in Lake Beulah. He stated this is a model many other Wisconsin lake associations need to follow. This praise should make us all feel proud as each of us does our part to protect and experience the gem we call Lake Beulah.

May we all continue to enjoy the lake this summer. This new thing we call "social distancing" should only make the job easier for the lake patrol because I'm sure all will make sure their boats maintain legal distancing given our new awareness.

Have a great summer everyone and I hope to see you at the June 27th meeting.

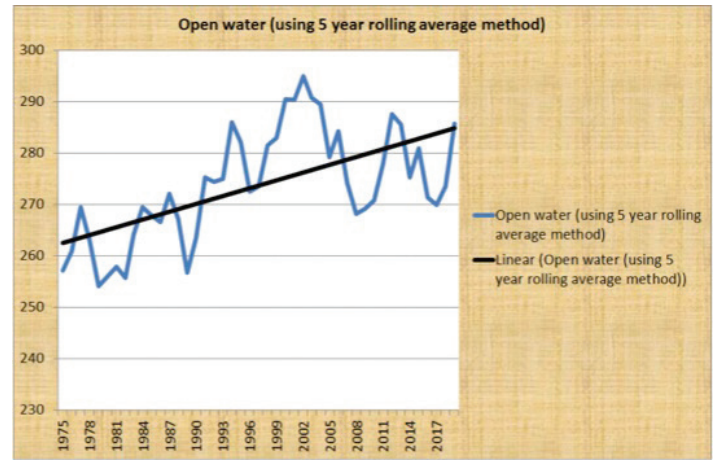
What you're seeing here in this second graph below are all of Ann's records from December 1970 through March 2020. The top (blue) line shows fifty years of data on how many days the lake was clear of ice (open water). The bottom (red) line plots the number of days Lake Beulah was ice covered.



On both top and bottom graphs, the dark line shows the clear 'trend' is towards a lot more days of open water and fewer days of ice cover.

But of course, as Ann pointed out last December, *Contrary to what is happening on the other end of the lake, our end has not frozen yet and of course is currently thawing. I am quite sure that when this all plays out there will seem to be differences on agreement as to when it actually freezes. People who live on Mill or East Shore RD for instance have been telling us for weeks that they are all solid ice. Interesting isn't it?*

Yes. All data is but a snapshot in time.



Looking at the data a bit differently, the above graph showing the 5 year rolling averages of open water helps mitigate for wildly cold or warm weather extremes that might end up skewing the picture, but doing so without ignoring those years. The dark trend line again makes it clear there has been a big change over the last fifty years.

So over the years, whether they realized it or not, people like Ann around Lake Beulah have seen a major shift towards more open water and less ice. The causes of this phenomenon might lead to conjecture so for now we'll leave it up to readers to make their own judgment.

One question those of us at Lake Beulah today might ask is, *'How might this change in ice cover affect the lake and its ecology?'* That's something for another article. Watch for it in the next issue of *Lake Views*.

It's likely that not too many lakes have this much ice on/off information, a fifty year snapshot of Lake Beulah History. Thanks Ann!

BALD EAGLES ON LAKE BEULAH



Submitted by Eric Tarman-Ramcheck

I remember when I saw my first bald eagle on Lake Beulah. I was up on the hill at Camp Charles Allis and witnessed a moment etched in my mind to this day. It was 2010 on a crisp fall afternoon, with the leaves starting to turn. Perched on a large white oak tree, an adult bald eagle took off over the tamaracks and lake below to fly towards Divine Word Seminary. Seeing that majestic bird was a pleasant surprise, and one I've become more accustomed to since then. I've seen them during every season, from ice-covered winter, to sunny summer days.

Our national bird, the eagle is also an important symbol to our country's indigenous cultures, which hold Eagles in a sacred manner. Strength, power and freedom are words that symbolize the birds' attributes, but its population wasn't exactly strong throughout Wisconsin for many recent decades.

Our population of bald eagles in the contiguous United States was threatened with extirpation in the mid to late 1900s. Many factors contributed to the decline, to a point in the 1950s when there were only 412 known nesting pairs of bald eagles in the whole 48

contiguous states. Factors like illegal shooting/poaching and thinning of egg shells on nests by the pesticide DDT contributed to the decline. A New York ornithologist reported in 1930 that approximately 70,000 bald eagles had been shot in the previous 12 years.

Fortunately, today the bald eagle population is growing, as well as the number of bald eagle nests. Today, the majestic bird is regarded by the DNR as a "least concern" for becoming endangered or extinct and it is reclaiming long-lost nesting places. The DNR has confirmed nesting pairs of eagles in areas near Lake Beulah.

Bald eagles, while no longer endangered are still protected by several Federal, State and local ordinances with serious penalties for violations. It is illegal to in any way disturb a nesting site (either active or inactive) or to possess any eagle part without a permit.

I am delighted to say my personal sightings of bald eagles on Lake Beulah are becoming ever more frequent, yet another example of natural beauty to behold on the lake. I hope you too are able to enjoy the majesty of our national symbol flying over our beautiful lake.

Editor's Note: With all the eagle sightings, it's likely some readers have some great eagle photos. Please send them to ProtectLakeBeulah.org. And speaking of birds, a white pelican was recently seen on the lake. Photo on the website!



**KETTLE MORAINÉ LAND TRUST
(KMLT) NEWS**

**SPRING BLOOMS AT
BEULAH BLUFF**

As spring arrives on the shores of Lake Beulah, wildflowers begin to show themselves, dotted among the trees at the Beulah Bluff Preserve. Round-lobed hepatica (*Anemone americana*) is one of the first to appear in April, with its pale lavender or white blossoms held on short, fuzzy stalks. The month of May will see a profusion of additional blooms, among them the dainty, yellow bellwort (*Uvularia grandiflora*), and the creamy spirals of wood betony (*Pedicularis canadensis*).

As the season advances toward summer look for prairie flowers to begin blooming in the open areas along the southern crest of the bluff, while taller blooms express themselves in dappled sunlight under the trees to the north.

The entrance to Beulah bluff is at 9026 Bakavi Way. The gravel driveway leads to a small parking area adjacent to a wooden observation platform. A new trail loops from the parking lot along the rim of a large, wooded kettle depression. **You're invited to walk the trail and share your stories and photos with us: info@kmlandtrust.org.**

Enjoy your visit!



IS LAKE BEULAH'S WATER QUALITY SCORE A RED FLAG?

The Water Quality Report in this issue of *Lake Views* shows the lake's ranking with respect to others has been slipping. This should be a cause of some concern. Your LBPIA's water quality chair Keith Beren makes it clear if we want to improve Lake Beulah's water quality a concerted effort by everyone all around the lake will be necessary to reverse this troubling trend.

Here is what you need to know

Arguably, the biggest single factor affecting water quality is the amount of phosphorous. The more there is, the more plants and algae will be in the lake. While phosphorous is a naturally occurring substance in lakes, significant amounts can and do enter the water due to human activities. When it rains or the snow melts, water runs across land all around the lake picking up phosphorous and depositing it into the water. Sources of this phosphorous include lawn and agricultural fertilizers, eroded soil, septic systems and pet waste.



What can landowners do to help?

1. Best is to entirely stop or at least limit the use of lawn fertilizers. If you can't stop using fertilizer, then use one that is phosphorous free. Fertilizers are labeled with three numbers. Phosphorous is the middle number. Make sure that number is 'zero'. If you use a lawn service, insist on this.
2. Never use fertilizer within 25 feet of the lake.
3. Don't apply fertilizer on frozen ground, before a storm, or in spring until 3 weeks after the lawn greens up.
4. Leaves, grass clippings and animal waste are all sources of phosphorous. Bag or put them in an area where they won't end up in the lake.
5. Control erosion on your property and create a protective berm along your shoreline to hold runoff back from the lake.

It sure seems that the trend in water quality of the lake is not what any of us wants to see. As recently as the year 2000, the TSI level was at 42. Last year, it was 51. This should be a call to action for all who love the lake and appreciate its clean water and natural surroundings. We can help the lake make a change. Let it begin with us, and let us begin now!

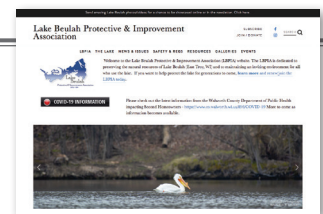
Editor's Note: Water quality is also a major concern of the Lake Beulah Management District. See Chairman Dave Bitter's article in this issue of Lake Views.

PROTECT LAKE BEULAH WEBSITE UPDATE

New Website: In May 2019, the LBPIA launched a new website (ProtectLakeBeulah.org) to more easily communicate rich and timely information to you, our membership. We updated the prior content and added many new photos. The new site is also Mobile phone friendly, so it should be easy to use on your phone too! Please take a look and give us your thoughts.

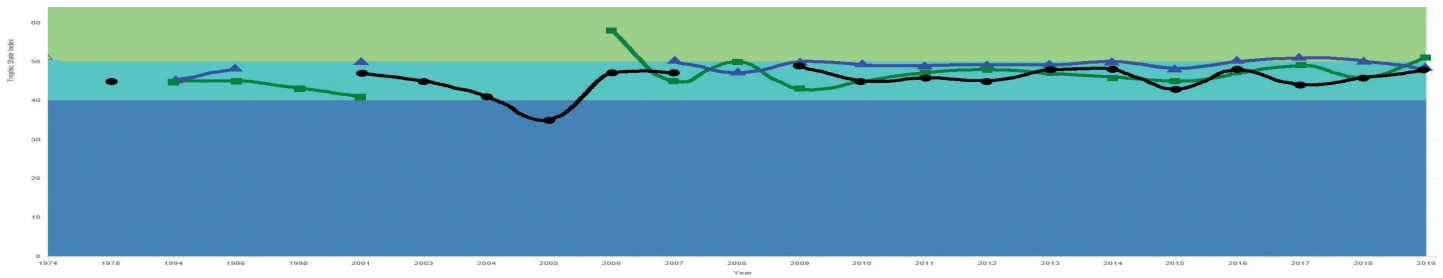
Features & Resources: Join or Renew your membership easily through the website. A link at the top of the homepage "Join / Donate" will take you to the correct page. It will help us to match your payment with your address if you add your lake address to the notes field during signup.

Coming Soon: Over the coming months please look for new content and features as we refresh the site more frequently. *What kind of information/content would you like to see?* Please let us know at Info@ProtectLakeBeulah.org



LAKE BEULAH WATER QUALITY REPORT

by Keith Beren – Water Quality



I will be starting my seventh year collecting water samples and recording water clarity, temperature and dissolved oxygen (D.O.) readings for our Lake Beulah. As you read this report, if you think you would like to volunteer, please contact me through ProtectLakeBeulah.org. Without volunteers, we would be unable to gauge the health of the lake.

For this report the point of collection is in the upper (long lake) portion of Lake Beulah by the boat launch. The graph above shows testing data back to 1974.

A more detailed view of this graph can be found on the DNR website: <https://dnr.wi.gov/lakes/clmn/reports/tsigraph.aspx?stationid=653121>

An overall analysis shows Beulah to continue its long history as a mesotrophic lake, one with good water quality. Data shows that since 2007 Lake Beulah has had Trophic State Indices (TSI) between 40-50 indicating moderately clear water, but increasing chance of low dissolved oxygen in deep water during the summer.

TSI data points on the GREEN line represent chlorophyll, a pigment found in aquatic plants. That Chlorophyll TSI has gone up the past two years is likely due to a tremendous amount of rainfall, leading to runoff of sediment/pesticides/fertilizer (especially phosphorus) into the lake.

Data points on the BLUE line plot phosphorus TSI. As you can see, Phosphorus levels are typically higher than chlorophyll levels. If we can lower the phosphorus levels by reducing sediment, pesticides, and fertilizers getting into the lake, the chlorophyll TSI levels will go down. Ideally we would like Lake Beulah to be in the low 40's. This is possible with a concerted effort on behalf of everyone all around the lake.

The black line represents Secchi Disk readings. The Secchi disk determines the amount of light penetration (water clarity) and readings are heavily dependent on algae growth. The deeper you can see the disk, the more light penetration and the lower the algae count. Secchi disk readings of 6 feet or less indicate light is restricted and algae count high.

In general, all three TSI variables; Chlorophyll, Phosphorus and Secchi Disk pretty much mirror each other's results.

Why TSI?

The WI DNR uses the Trophic State Index for chlorophyll to gauge a lake's health. It is a score from 0 to 100. The lower the TSI number the healthier the lake, plants and fish are.

| TSI Range | Trophic State | Water Quality |
|-----------|------------------|--|
| 0-40 | Oligotrophic | Excellent |
| 40-50 | Mesotrophic | Water moderately clear, but increasing chance of low dissolved oxygen in deep water during the summer. Historically, Lake Beulah is in this range. |
| 50-60 | Eutrophic | Becoming eutrophic: decreased clarity, fewer algal species, oxygen-depleted bottom waters during the summer, plant overgrowth evident, warm-water fisheries (pike, perch, bass, etc.) only |
| 60-70 | Eutrophic | Poor, Blue-green algae become dominant and algal scums are possible, extensive plant overgrowth problems possible. |
| 70-80 | Eutrophic | Becoming very eutrophic. Heavy algal blooms possible throughout summer, dense plant beds, but extent limited by light penetration (blue-green algae block sunlight) |
| 80 > | Hyper- Eutrophic | Algal scums, summer fishkills, few plants, rough fish dominant. Very poor water quality. |

How does Lake Beulah compare to other area lakes of larger acreage?

| Lake | Acres | 2019 TSI (chlorophyll) | 2019 Water Quality | 2019 Trophic state | Most recent 5 year average | 5 year average Water Quality | 5 year average Trophic state |
|----------------|-------|------------------------|--------------------|--------------------|----------------------------|------------------------------|------------------------------|
| Lake Beulah | 812 | 51 | Moderate | Eutrophic | 47 | Good | Mesotrophic |
| Cedar Lake | 937 | 43 | Good | Mesotrophic | 43 | Good | Mesotrophic |
| Lake Nagawicka | 981 | 45 | Good | Mesotrophic | 43 | Good | Mesotrophic |
| Delevan Lake | 1,906 | 53 | Moderate | Eutrophic | 52 | Moderate | Eutrophic |
| Lake Geneva | 5401 | 39 | Great | Oligotrophic | 39 | Great | Oligotrophic |

More Information Soon At ProtectLakeBeulah.org

Starting in May we as a board have decided to provide members with a monthly (May- Aug) Score Card. This Score card will include chlorophyll and phosphorus results, as well as Secchi disk readings, water temperature and dissolved oxygen levels. Watch for updates.

Annual water quality reports for Lake Beulah are accessible at <https://dnr.wi.gov/lakes/waterquality/Station.aspx?id=653121>



WHAT CAUSES THE FOAM ON MY SHORELINE?

Submitted by Carol Stein from *Important Questions and Answers on Wisconsin Lakes*, WI DNR

In most instances the "foam" we see on the surface of our lakes and streams is natural, and while it's not aesthetically pleasing, it's harmless. The foam is created when natural organic compounds, such as those from decomposing plants and animals, are mixed with air as a result of wind and waves, or as water flows through rapids or over a dam. The foam often will collect on a downwind or downstream shore. In some cases, the foam appears after a bloom of a species of algae called a diatom, which has silica-based shells that break down.

2020 LBPIA MEMBERSHIP... JOIN OUR T.E.A.M.

This issue of *Lake Views* is being sent to all riparian owners. All of us have a stake in the health and vitality of the lake and surrounding community. In the spirit of TEAM, **T**ogether **E**veryone **A**chieves **M**ore, the LBPIA board of directors extends an open invitation for all to join us.

Through membership, you join an ever-growing roster of people around the lake who support efforts to preserve the natural resources of Lake Beulah for generations to come, while maintaining an inviting environment for all who use the lake.

WHY BECOME A MEMBER*?

Join your fellow LBPIA members in supporting efforts to ensure the pristine quality of our lake remains for future generations. By becoming a member*, you will be supporting LBPIA initiatives such as...

- Representing the general good of the entire lake community
- Lake issue advocacy
- Water quality testing and monitoring
- Protection of the natural beauty of the lake and surrounding lands
- Informative **Lake Views** newsletters
- Our regularly updated, ever-evolving website **ProtectLakeBeulah.org**
- Fish stocking
- Educational opportunities for local school children

- Connections to DNR experts
- Keeping everyone informed on important issues
- Addressing new issues as they arise
- Opportunities to volunteer and help out
- Spring and Fall meetings to stay connected to your Lake Beulah community, meet board members and hear from experts on issues involving the lake.

* New members receive a 16"x20" colorful historical map of the lake as well as a LBPIA address pier plaque.

LBPIA membership is \$40 per year. Please make checks payable to LBPIA and mail to P.O. Box 153, East Troy, WI 53120 — OR visit ProtectLakeBeulah.org and pay online using PayPal.

When renewing through PayPal or USPS mail, so we have your current information, please fill out the important membership information form located at ProtectLakeBeulah.org. (The form is at the bottom of the membership page.) Please mail or email the completed form to membership chair Steve Schmitendorf (stevelbpia@gmail.com)

Just a friendly reminder that if you have not already done so, please send in your 2020 membership dues today.

Thanks to all who have already paid their dues!

COMMUNITY CENTER OPENS IN EAST TROY

Submitted by LBPIA member John Finney

Community Centers provide a place for people of every generation to connect in towns large and small across America. Several years ago, a local grass roots group of business, education and social service leaders committed to enhancing our residents' quality of life and promoting the area as an energetic place to live through all stages of life.

Last September the East Troy Area Intergenerational Community Center (ETCC-a 501c3), opened its doors, a big name with humble beginnings. The founders were able to rent the East wing of the old Doubek school, sharing space with the ET School Board and Food Pantry, just two blocks from the historic square.

Since then, with several large spaces and a small kitchen, the Center has hosted well over 1,500 visitors, providing weekly senior lunches, big screen movies, health/wellness/safety seminars, after school Game Room, crafting sessions and of course, BINGO. Other creative services include a "Parent's Night Out" to allow parents to getaway for an evening, renting large rooms for meetings and special events as well as sponsoring a series of theatre plays at Ivan's Backstage to raise funds.

The "intergenerational" theme runs throughout the daily schedule, recognizing the need to bring kids of all ages together with community elders, a common space for all to interact and share. The mission of the ETCC is to "Gather community and

county services under one roof to promote meaningful interaction opportunities for residents of all ages."

Beyond the current activities, the near term plan is to integrate several state and Walworth County sponsored programs to the East Troy area. Today with the COVID19 threat underway, we are reminded of the needs of the elderly in our community. Hence, though the ETCC is presently closed as of this writing (March 31st) we are considering plans to organize deliveries of groceries to seniors and are hoping to work with local businesses to make that a reality. There is no better time to unite as a community, and to take care of our elders, as they once did for us.

ETCC is an all-volunteer effort with no payroll, and operates solely on the generosity of the community to cover the \$15k annual rent, and so any sponsorships, donations of time or money are welcomed to help expand services, such as a "Homebound" senior transport service and workforce development sessions. Visitors and tours are welcomed anytime with hours T, W, Th 9-5pm and Fri 9-noon at 2040 Beulah Ave Ste A or by driveway via Division St. or see more at: IGETET.com, or call 262-642-2266 ask for directors Martha Bresler or Lloyd Senini.

Editor's Note: Articles submitted by LBPIA community partners with positive benefits to the Lake Beulah community can appear in Lake Views with approval of the LBPIA Board on a space-available, case-by-case basis. Contact LakeBeulah.LakeViews.Editor@gmail.com

A MESSAGE FROM TOWN OF EAST TROY POLICE CHIEF JENSEN



Don P. Jensen Sr.

The fishing season of 2020 is fast approaching as is the recreational boating season. Operating a water vessel is a very dangerous undertaking. There are no marked traffic lanes, stop signs, yield signs, or speed limits. Vessels crisscross in front of and behind each other. Vessels are towing skiers and fishermen are anchored or drifting on the water. The winds constantly change. Swimmers in the water and hidden debris floats just under the water's surface.

If your vessel breaks down or someone falls overboard, you cannot just exit the boat and walk out to help. Retrieving a person from the water is dangerous and requires the utmost attention and assistance not encountered on land.

Stated simply and succinctly, boating safety presents an entirely different set of circumstances, and it is essential you have the correct "tools in your tool box" to operate your vessel safely and, if the situation presents itself, assist those in need of help and assistance.

My Department's Water Patrol Officers are available to conduct vessel inspections. We will inspect your vessel and make sure you have the proper equipment on board. We will check to make sure your equipment is serviceable. You may contact us on the water, wave us down, or call and make an appointment for one of my members or myself to come to your home (Town of East Troy residents) and inspect your vessel. If your vessel is trailered, drive over to the station house. All I ask is you call and make an appointment for station house inspections. The Department phone number is 262-642-3700. We are conveniently located in the Town Hall at N9330 Stewart School, Road.

I would like to make it perfectly clear, if you stop us on the water and ask for a safety inspection, we will do that for you. If you have an equipment deficiency, we will not cite you. Rather, we will educate you as to what you need to correct the problem.

Safety is our #1 concern. **We** want you to have fun and enjoy the waterways of our community. **WE** can accomplish this by working together to ensure a safe boating environment for everyone.

A few questions keep coming up, so I'll include a few helpful FAQs here.

Fire extinguishers should be checked for functionality. Some have a gauge which you can check to see if the extinguisher is still usable. But if there is no gauge, pick it up and shake the

extinguisher, then listen on the side of the canister. You should hear sediment falling from top to bottom. If it falls gently, the material inside is still usable, but if you hear a sudden thud of a big clump of sediment falling, that fire extinguisher needs to be replaced. Earlier this year there was recall on fire extinguishers. Check out the Town of East Troy Police Department Facebook page for details.

One more pointer from FAQs I have had is about wake. A boat owner/operator is responsible for the wake of their boat. If a wake floods your boat or does damage, try to write down the time and place and the registration numbers of the boat, and then report the incident to our office. Be careful that your wake does not endanger other boaters or damage equipment or shorelines.

Some of the basic equipment required for safe operation is:

- If you were born after 1-1-89 – Boaters Safety Certificate on board (PWC and motorized boats)
- Certificate of number affixed to your vessel (PWC and boats)
- Expiration decals displayed
- Wearable PFD: Type I, II, III or V (to include unpowered boat)
- Throwable PFD: Type IV (boat 16' to less than 26')
- Type B-1 fire extinguisher
- Operational navigation lights

(There are additional requirements for those operating on federally controlled waterways. For additional information check out the WI DNR web page concerning boating)

I would like to leave you with this quote. It is appropriate for any body of water – "To insure safety at sea, the best that science can devise, and that naval organization can provide must be regarded only as an aid, and never as a substitute for good seamanship, self-reliance, and sense of ultimate responsibility which are the first requisites in a seaman and naval officer."

~ Admiral Chester W. Nimitz

Regards,

Chief Don P. Jensen Sr.
Town of East Troy Police Department
WLEEDA Class #001

CLOSE CALL ON THE LAKE

It was around the year 1955. Off the stern of a small rowboat, I trolled a bait from my fishing rod as my grandfather rhythmically rowed. At first I didn't notice the drone of an engine, but I did notice a quick change in the cadence of my grandpa's rowing. The drone became a roar and I looked up over Divine Word Seminary to see a sea plane bearing down right at us. My grandpa rowed furiously to get out of the way as the plane splashed into the water just beyond us. A close call!

The dictionary defines a 'close call' as a bad situation that almost happened. Over the years Lake Beulah has seen many of those. Maybe you've seen one too. If so, send your submission (100 words or less) to the *Lake Views* editor at LakeBeulah.LakeViews.Editor@gmail.com

fireworks on the lake

A TRADITION OF MANY YEARS

Fireworks have been a tradition over Lake Beulah for many years. The lake is a 'natural' for a pyrotechnic display. Its spaciousness allows for viewing from any angle. Its surface reflects and amplifies the sparkly spectacle, and it is generally safer too.

Most folks associate fireworks with our country's Independence Day celebration. It seems no one is sure how long fireworks have been part of Lake Beulah's July 4th excitement, but it's easy to imagine hotels around the lake entertaining their guests with a show.

Compared to the fireworks of the old hotels, the displays of today are fantastical. One might imagine years ago, most folks watched from along the shore, but nowadays hundreds also watch from a flotilla of boats out on the water. Fireworks night is a Lake Beulah tradition, one carried on over many years by a group of selfless volunteers calling their group the 'Fireworks Committee'.

Lake Views reached out to the Fireworks Committee with some questions, the idea being to gather some little-known facts and history. Here's what they tell us.

What is the history and current makeup of the committee?

Our fireworks committee is an experienced group of volunteers, who plan, deliver fireworks, build launches, stage, set up the pyrotechnics, ignite and clean up. Fireworks were started with collaboration between Butch Knopf, Doug Dorn and Glen Kreinbrink. Then, 20 years ago, Jim Kutschenreuter and Kent Haeger inherited the fireworks from Doug and Hardy Will. Kent and Kutsch managed the show for many years themselves. Over the years, Kent and Jim recruited the top-notch planning team that is in place today, which also includes Julie Haeger, Ron Jarecki, Brandon Bortoli and Dale Roble.



Jim Kutschenreuter orders the display with help from Kent Haeger. For the past 20 years, Julie Haeger has been responsible for advertising, collection, obtaining permitting from the Town and on-shore safety the evening of the show. Dale Roble has now stepped into that role. Last year Dale introduced the option of electronic donations using Zelle and Venmo thereby making donations more convenient. Fundraising relies on email, USPS mailings and fliers to notify the families and businesses around Lake Beulah.

Once the "stage is set", Brandon Bortoli heads the group that sets up the pyrotechnics and choreographs the displays to make sure the size, color and timing produces the best show.

What is involved in readying for the show each year?

- Fireworks are ordered by Dec 31. For 2020, we avoided a price increase, 10% tariff scare, and received a better, more creative selection of fireworks from our supplier.
- Securing insurance and permission from the East Troy Fire Chief---East Troy Fire Dept.
- Fireworks are delivered to East Troy at the end of June
- Local companies Envirocon, Pro-Fab and Kutsch Construction work together to transport the fireworks from the storage area to the island.
- There are approximately 10-12 people on the island to create the show. Set-up committee volunteers devote time and materials to build a safe working environment for the best show possible. In about 4-5 hours, this experienced team places cartons loaded with fireworks and readies launch tubes for firing. The committee then returns the next day for clean-up.

Do you put the fireworks in a launcher before the show?

The fireworks are shot from thick metal tubes. The tubes vary in diameter from 3" to 8" to accommodate fireworks' size. The tubes range in height from 24" to 36". Those tubes are inspected and cleaned before each event. We also use shot boxes which contain anywhere from 50 to 150+ fireworks that are ignited with the lighting of one E-Match spark. The Grand Finale uses many shot boxes to produce the sensational display.

How many of each type of display and how much does each cost?

This varies from year to year. A total of 3,100 fireworks of all sizes were fired off last year. Fireworks range in cost from \$11.00 each to over \$200 or more depending on the complexity of color and display.

How much time after a fuse is lit on an individual display before showtime?

When a fuse is lit, it is almost instantaneous to ignition. For 2020, we enhanced the excitement of the displays with the purchase of new remote pyrotechnic devices using E-matches.

Support Lake Beulah FIREWORKS!

It is only through your financial support that this tradition continues. The greater the donations, the **bigger, brighter and bolder** the display! Please donate generously and help make more wonderful Lake Beulah memories on July 3 or rain date of July 4.

100% of your donation will be used to purchase fireworks.
For 2020, a donation of \$50 or more per family is encouraged.

Please send checks to:

Lake Beulah Fireworks, PO Box 528, East Troy, WI 53120

Donations are also accepted in cash or via Zelle and Venmo
Zelle and Venmo use:

Lakebeulahfireworks@gmail.com (Dale Roble)

Send comments or questions to
Lakebeulahfireworks@gmail.com

**Thanks to the following businesses for their support;
Envirocon Snow & Landscape, Kutsch Construction,
Lindley's on Beulah, Lulabell's Dockside, Pro-Fab**

How far away are you from the fireworks when you light a display with a fuse? 8 feet, using a road flare on a stick

What are your protection and safety practices? Safety is paramount. No exceptions! Personal safety is also enhanced by recently purchased remote pyrotechnic ignition devices which will expand the distance to 20'-30' from some of the larger displays—for example the Grand Finale. With these devices, a signal is sent to a small WIFI device, to trigger the E-Match that creates a spark and ignites the fuse.

When did the show move to Buck Island? The original location was from Staff's house off East Shore Road, right out of Dorn's bay. The show moved around, depending on who would allow it. B'nai B'rith one year, but mainly from Wills point, until Buck Island in more recent years.

When will the fireworks happen this year? Friday, July 3. Rain date is July 4. The show begins 30 minutes after sunset.

Each of us holds many beautiful memories of Lake Beulah. Without question, one of those is the tradition of watching the fireworks and together sharing the celebration of our great country's birth. Sharing those moments aboard a boat with family and friends or from a spot on shore on a beautiful summer night, the lake shimmering with lights, is a feeling like no other. It is magic!!! Thank you to the selfless volunteers of the 'Fireworks Committee' for continuing the tradition!

WHAT'S UP WITH THE LAKE BEULAH COUNTRY CLUB?

An iconic area property is up for sale at an asking price of \$2,900,000. The original Lake Beulah Golf Club was opened as a 9-hole course in 1920 by the president of Johnston Cookie Company in Milwaukee. Sold in 1943, today's owners are descendants of that buyer. It was that family which expanded the course to 27 holes. The course is reputed to have 'the longest hole in Wisconsin' at 622 yards.

Pressure to develop open lands around Lake Beulah continue. Stay tuned.

SURVEY RESULTS

In an attempt to open dialog between Lake Beulah folks, last fall *Lake Views* asked its readers three questions. The response wasn't something the editor had hoped for. There were zero replies to the questions 'What do you like about Lake Beulah?' and 'Do you have a fish story?' Seems those ideas went over like a lead balloon. (Lesson learned by the editor.)

The question, 'How long have you been coming to Lake Beulah?' did receive some replies. Not enough to post a top ten, but here's what we learned.

- The Thomas/Hoffman property on East Shore Road was built in 1893 and purchased in 1909 by the ancestors of current owners Pat and Greg Thomas. The house has been continuously occupied for 110 years.

MEMORIES OF FIRST SIGHTING OF LAKE BEULAH

By John Sonderegger

The year was 1940. My parents had learned of summer cottages for rent on a lake in Wisconsin called "Beulah." The owner was a shirttail relative on my mother's side of the family. Dad said, "If we are going to consider renting the home, we better go investigate where it is, what it looks like."

With that in mind, one late spring Sunday, dad and mom together with my two brothers and me (sister Ann not yet born) departed in the family car from our home on the south side of Chicago heading toward the Lake Beulah destination.

The drive took us along Chicago's beautiful lake front, up US 41 into Wisconsin to one of the highways leading west to the village of East Troy.

Then came the hard part of the trip, finding the home located somewhere on the shores of Lake Beulah in a subdivision known as Kings Park. Dad had a general idea of which part of the lake the home was suppose to be.

In those days, and at least in the part of the lake being searched, local roads were not paved. Instead, they were merely narrow lanes composed of hard packed earth or perhaps even covered with a little gravel. These lanes did not have names. Homes along them did not have numbered addresses and most did not have a phone. Cell phones and GPS were decades in the future.

For several hours we traveled up and down a number of the roads searching for Kings Park. A few times, when a stranger appeared, we sought the person's help. No one could provide any useful information. Finally, dad and mom gave up. We drove back to Chicago. I remember opining that never again should we go to Lake Beulah!

A few weeks later, armed with better information, we returned and found Kings Park. My parents were satisfied with the location, the homes. They rented one of them for two weeks in August 1940. That was the start of a long romance with Lake Beulah.

- The Thomas/Hoffman property also plays into the Synek Family's time on Lake Beulah with Mrs. Synek's great grandparents being the buyers. Having been visitors there, the Syneks subsequently purchased a home on East Shore Road and continue to enjoy the lake there.
- Bill and Carol Ponstein visited friends on Lake Beulah in 1971 and purchased their cottage on Horseshoe lane the following year.

ANOTHER SURVEY

A completely open-ended question. What would you like to read about in *Lake Views*? Send your thoughts to LakeBeulah.LakeViews.Editor@gmail.com

A MESSAGE FROM THE LAKE MANAGEMENT DISTRICT

From the desk of...

Dave Bitter, Chairman
Lake Beulah Mgmt District

As I write this article, we are all in the throes of the Coronavirus - which we will overcome. And as sure as the sun rises in the east, spring will come and return us our beautiful Lake Beulah

The Management district held its winter meeting in mid-March. The meeting went smoothly with quite a few lake residents in the audience. Most of the residents attending were there to observe and did not speak.

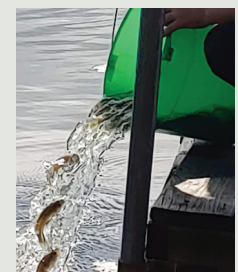
However Chief Jensen attended and gave a nice report on lake laws enforcement. While there have been more stops than last year, the number of citations is down 30%. Folks on the lake are following the rules and the people who have been creating problems went somewhere else. He stated that they do not have a quota for citations, but they have minimum standards, based on the number of hours patrolled.

In addition, Barry Loveland, President of the Booth Lake Management District attended and spoke about the current situation on their lake. As you are probably aware, they have very high water, caused in part by the wet weather they have had over the past years and part by the fact that they do not have natural spillway in which to shed excess water. They have had a no wake situation for quite some time. To help resolve this situation, Booth lake is proposing pumping its waters past the girl scout camp and eventually into the Lake Beulah Water Basin. They are working with the DNR and hope to reduce the lake level by 1 to 2 feet. I am in contact with Mr. Loveland and he is keeping us informed. Our district is willing to help if it can and if no harm comes to Lake Beulah. Our concern is

Plans are well underway for the stocking of Small Mouth Bass early this coming fall. With the help of Triangle Sportsman's Club and the Lake Beulah Management District, your LBPIA plans to match the contributions of last year (\$4,000). Additional dollars for this project are made available through designated membership donations. Thank you to those who provided an extra donation along with your annual dues!

Small Mouth Bass was recommended to us by our new fisheries biologist Travis Motl. He informed us the DNR will continue to stock the lake with Walleye under a special program where Lake Beulah is one of the designated lakes.

The LBPIA will once again use the fish stocking event as an educational opportunity to work with grade school kids, showing and teaching the ecological benefits of such a program. Both kids and adults alike really enjoy the day.



about the quality not the quantity of the water. The time frame is still undetermined at the writing of this article. We will keep you informed.

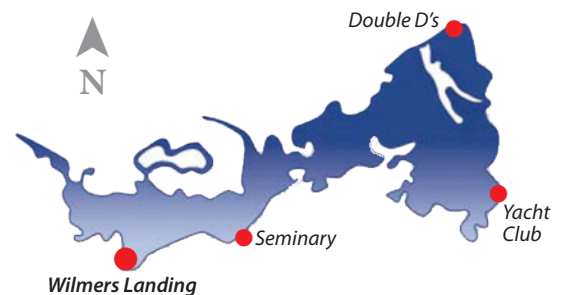
Also, I am happy to announce that we will be adding some new harvesting equipment this summer. We expect to be harvesting as soon as the aquatic plants start to grow. That generally is in June. Whenever it occurs our crew will be ready

Hopefully there will be no new crisis and we can all enjoy a peaceful summer on beautiful Lake Beulah.

Emergencies

Please use courtesy and common sense in operating your watercraft, ATV's, snowmobiles. Avoid creating a hazard, threat, stress, or irritant to others and yourself, to wildlife and to the lake environment. Respect others by turning down the volume of music or other amplification.

You can report situations to the Town of East Troy Police on the lake or call their non-emergency number: **(262) 642-3700**.



For all EMERGENCIES: DIAL 911
Identify LAKE BEULAH and ACCESS POINT (see map)

Try to provide the police with as much information as possible such as boat type, color, number of occupants, location where observed, and registration number. Note: when on the lake the Police also monitor the emergency Marine Channel **VHF CH72**.

Board of Directors

Area Chair Network

Serving on a voluntary basis, the Board of Directors are elected by the LBPIA membership. Board terms are three years; board members can serve a maximum of three terms (nine years).

| | |
|--------------------------|---|
| Tom VanDenBogart | President / Fish, Game & Wildlife |
| Carol Stein | Vice President |
| Steve Huening | Treasurer |
| Steve Schmitendorf | Membership, Communications & Area Chair Network |
| Keith Beren | Water Quality |
| Jim Blomberg | Website |
| Alyssa Klopatek | Secretary / Web |
| Brian Bellew | Marketing |
| Tom Bernhardt | Lake Views Newsletter Editor |
| John Sonderegger | Past President |

Area Chairpersons are committed Lake Beulah residents who serve as the primary contacts to the Association. They are your friends and neighbors, familiar faces who understand the issues surrounding your community. Should you have an interest or concern regarding the lake, please reach out to your area chair or a member of the board through ProtectLakeBeulah.org. Check (✓) YOUR Area Chairperson:

- Beach Rd & Deerpath Rd
Debra Dunn
- Beulah Heights Rd (W2002W1900) & Bavaki Way
Rob Hudson de Tarnowsky
- Beulah Heights Rd (up to W2002)
Richard Stenglein
- Beulah Park Rd
Dave & Peggy Krueger
- Byrnes Ln & Romadka Park Rd
Roy Gerloff
- Country Club Ln & Austin Rd
Steve & Mary Schmitendorf
- County Road J
Don Tacke
- East Shore Rd (Beach Rd to North end of Beulah Park Rd)
Debra Dunn
- East Shore Rd & Thistle Ln
Greg and Pat Thomas
- Horseshoe Ln & East Shore Rd (to Beulah Park Rd)
Chris Mackey & Karen Peters
- Kings Pkwy & Kings Ln
John & Bea Sonderegger
- Lake Rd & Windy Way
John & Susan Bron
- Marsh Rd & Millsite Rd
Don Tacke
- Oakwood Ln & Its A Little Rd
Don Stein
- Pastime Ln & Grandview Dr
Open: Volunteer needed
- South Shore Dr (up to Humphrey Ln)
Norm & Rose Sass
- Southshore Dr (west of an including Humphrey Ln to Beulah Park Rd)
Carrie Franzene
- Stringers Bridge Rd, New Deal Ave & West Bay Rd
Michol Ford
- Wilmer's Grove Rd, Wilmers Point Ln & Wilmers Landing
Val Johnson

Lake Views is published periodically by the Lake Beulah Protective & Improvement Association. Every effort has been made to provide correct and accurate information. There is, however, no guarantee as to the total accuracy of information included. The opinions expressed are not necessarily those of the LBPIA Board of Directors. Individuals who wish to submit articles, artwork, poetry, calendar items or photography may send contributions to **LakeBeulah.LakeViews.Editor@gmail.com**. Articles in Lake Views may be reprinted or reproduced for further distribution, with acknowledgment to the Editor.



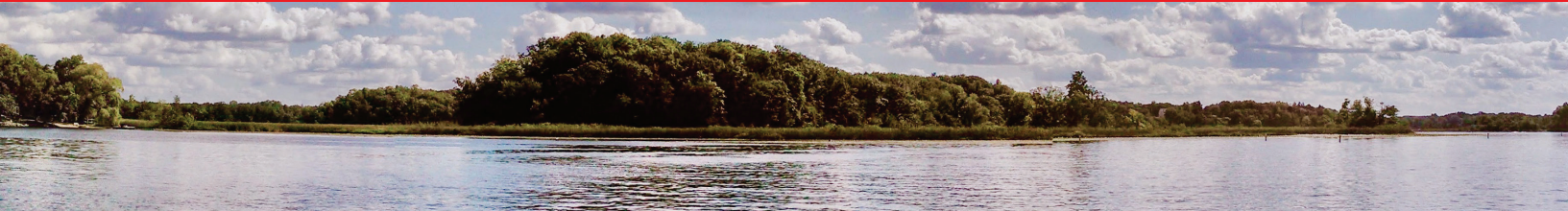
Lake Beulah
Protective and Improvement Association
Established 1894
P.O. Box 153 East Troy, WI 53120

Return Service Requested



Follow Us on Facebook and Instagram

MEMBER NOTES:



SATURDAY, JUNE 27TH @ 8:30AM **'EARLY SUMMER' LBPIA MEMBER'S MEETING**

East Troy Town Hall, (N9330 Stewart School Rd)
We are not canceling, just postponing.

Do you have any questions or comments you would like to have addressed? Please use 'Contact Us' on the website and watch ProtectLakeBeulah.org for updates and the potential opportunity to view a live stream of this meeting from wherever you are!

For updates on how COVID-19 is affecting our life on the lake, please check our website ProtectLakeBeulah.org.

Boat tours previously scheduled for this spring are being postponed until next year.

WELCOME TRAVIS MOTL, **LAKE BEULAH'S NEW FISHERIES BIOLOGIST**

Travis started his SE Wisconsin fisheries work in 2006 as a limited term Fisheries Technician at Eagle and then was appointed Plymouth Fisheries Biologist in 2010. In 2017 he took over as Horicon Fisheries Biologist. Now, in his new role as fisheries biologist for Kenosha, Walworth and Racine counties, Travis looks forward to continuing his professional "Tour de SE Wisconsin".



When he's off the clock, his three kids (Amelia 12, Isaac 10 and Hannah 7) keep he and his wife Lindsay busy.

Travis will monitor the health and well being of Lake Beulah's fish population and provide updates to our organization. Travis' work will also include selecting fish species for release each year in the LBPIA's fish stocking program. We welcome Travis and look forward to working with him!