



Lake Views Spring 2018 Newsletter

President's Message

Greetings!

Planting of my Lake Beulah roots took place in 1940 and those lake roots have grown ever since. Now some 78 years later, in my final year on the LBPIA board, certainly elderly and perhaps a little bit wiser, I am called to serve as its president. Out of love for this gem known as Lake Beulah and deep admiration for those who have served over the years as its stewards, I humbly take on the responsibility.

The LBPIA board has nine directors who voluntarily take on the task of conducting the affairs of the organization. The board operates through committees such as membership, newsletter, website management, fish and wildlife, marketing, and water quality. At one time or another LBPIA membership has elected each of us. We serve three-year terms and, according to the by-laws, may be reelected for two additional terms.

Two of us will finish the race this year. Another has resigned. Jim Blomberg has agreed to join the board. He will be proposed for election at a members meeting. New faces on the board assure a continued vitality. I hope you may have an interest in exploring the possibility of becoming a director. Contact me or one of the other directors.

In 2018, board members are striving to improve our communication with members. We apologize for the failure to produce the usual fall Lake Views brought on by unforeseen circumstances. Tell us what you think of this new version.

Recognizing the growing importance of electronic communication, we have improved the LBPIA website. More needs to happen. And we must find a way to eliminate the old website, a source of confusion. Through Steve Schmitendorf's initiative, we are producing timely electronic message capabilities with the membership.

A review of the by-laws is in the cards. Whatever changes seem appropriate will be brought to the members for approval before the year is over.

The Town of East Troy board is considering an ordinance involving ballast tank boating on Mill Lake. Watch for announcements by the Town of when public input to the process is to take place. We will strive to keep you posted on such dates.

Best wishes for a fine summer.

John Sonderegger
847-284-4412
johnsonderegger@att.net



General Membership Meeting

Meeting Date: Saturday May 19, 2018

Time: 9:00 A.M.

Location: Town of East Troy Town Hall



2018 Membership Dues

Just a friendly reminder that if you have not already done so, please send in your 2018 membership dues.

Thanks to all who have paid their dues!

When renewing through PayPal or USPS mail, please fill out the membership information form located on the LBPIA website. (The form is at the bottom of the membership page) Please mail or email the form to membership chair Steve Schmitendorf.

NEW! E-mail Updates

As part of your membership package, we would like to introduce email updates. Our goal is to keep our membership informed regarding important issues involving the lake and upcoming events. It is not our intention to send out excessive emails that are bothersome to our membership. If you decide that you would rather not receive updates from the LBPIA you can "unsubscribe" using the link at the bottom of the email. Please let me know if you would like to change your email address or add another family member and/or friend to receive these email updates. Feel free to contact me with any questions or concerns.

Thank You,
Steve Schmitendorf
Membership Chair
stevelbpia@gmail.com

em@il

Watercraft Courtesy & Emergencies

From the Town of East Troy Police Chief Don Jensen

Please use courtesy and common sense in operating your watercraft. Avoid creating a hazard, threat, stress, or irritant to others and yourself, to wildlife and to lake environment. Respect others by turning down the volume of music or other amplification.

You can report situations to the Town of East Troy Police on the lake or call their non-emergency number: **262-642-3700**. For all **EMERGENCIES DIAL 9-1-1**. Try to provide the police with as much information as possible such as boat type, color, number of occupants, location where observed, and registration number. When on the lake the Police also monitor the emergency Marine Channel. **There are four emergency access points. Wilmer's Landing, Seminary, Yacht Club, and Double D's on Hwy J. Signs like the one to the right are posted in all four locations.**

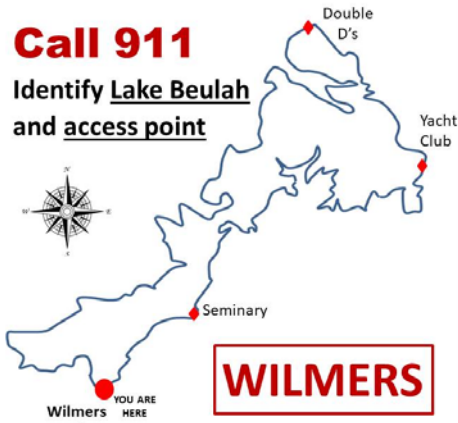
Now is the time to start getting your vessel ready for the summer. Check your battery, navigation lights, PFD's, lines, portable marine radio battery, boat registration, fire extinguisher, check the engine for serviceability, clean fuel (first fill add STA-BIL) and general overall condition of your vessel.

EMERGENCY
CALL **9-1-1** FIRE
POLICE
MEDICAL

**IN CASE OF
EMERGENCY**

Meet emergency personnel
at these access points

Call 911
Identify Lake Beulah
and access point



VHF CH72 monitored by police while on patrol



Guest Speaker At Our Spring Membership Meeting

Luke S. Roffler

Senior Fisheries Biologist – Racine, Kenosha and Walworth Counties
Wisconsin Department of Natural Resources

I am currently writing up a northern pike regulation change proposal for Lake Beulah for the 2019 Spring Hearings. We recently received word that two new pike regulations will be available in our “toolbox” of regulation options, one of which is very suitable for Beulah. Please take a moment to read my thoughts below. I’d also be happy to come present on the topic at an upcoming meeting of yours.

We did our comprehensive spring survey on Beulah in 2016. Our pike abundance was relatively low (though we had odd spring weather and the open stream connection on the west side allows pike to leave the lake), but size structure was incredibly strong. The diversity of habitat and forage in Beulah has all the makings of a big pike factory. However, the current southern zone base regulation of a 2 daily bag and a 26” minimum length limit requires anglers to remove pike in their prime if they want to harvest. A new option available to us will be a **maximum length limit**, which will allow anglers to harvest smaller pike, while requiring the big ones to be released. This regulation is almost always more suitable for pike, which are typically stocked to maintain top predator pressure on rough fish and small gamefish, which they do best at larger sizes. It’s especially appropriate for a system like Beulah, where top-end pike growth is extremely strong and this change will encourage memorable trophy pike fishing in a system that can clearly support it. My understanding is that many of the regulars on Beulah already self-regulate in a similar way, harvesting smaller legal pike, while releasing the big ones. The specific length of the maximum length limit is TBD, but we’re thinking it’ll likely be 26” or 28”. Beulah could possibly move to the new protected slot regulation many years in the future if we see a spike in abundance from the max regulation.





Above photos by LBPIA member Julie Goelz

Send your favorite Lake Beulah photographs to Steve Schmitendorf / stevelpia@gmail.com



Every summer on Lake Beulah an independent group of Lake Residents creates a fireworks show to celebrate our 4th of July Independence Day. The volunteers purchase the fireworks, develop the program, set up the display, arm the launch pads, and execute the magnificent and awesome show that we enjoy. This year the event takes place on the evening of **July 3. (Rain date July 4)**

It takes thousands of dollars to finance the event. Supplier costs continue to increase so your strong financial support helps the committee maintain this spectacular show. Your voluntary contribution of \$30 - \$50 or more is greatly appreciated and makes this event possible.

100% of your donation is for the purchase of fireworks

Please make checks payable to:

Lake Beulah Fireworks

P.O. Box 528, East Troy, WI 53120



**★ Have a safe ★
Memorial
Weekend! ★**

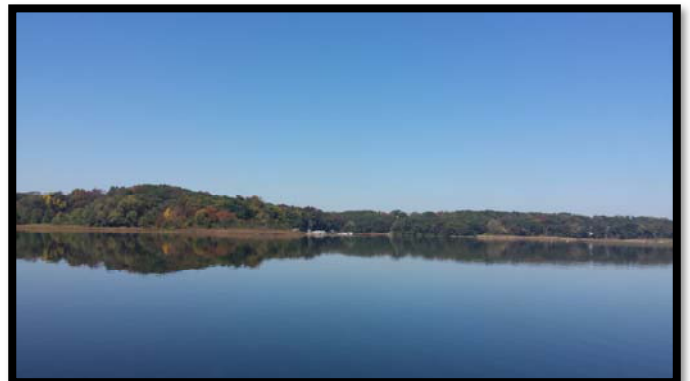


Photo by Julie Goelz

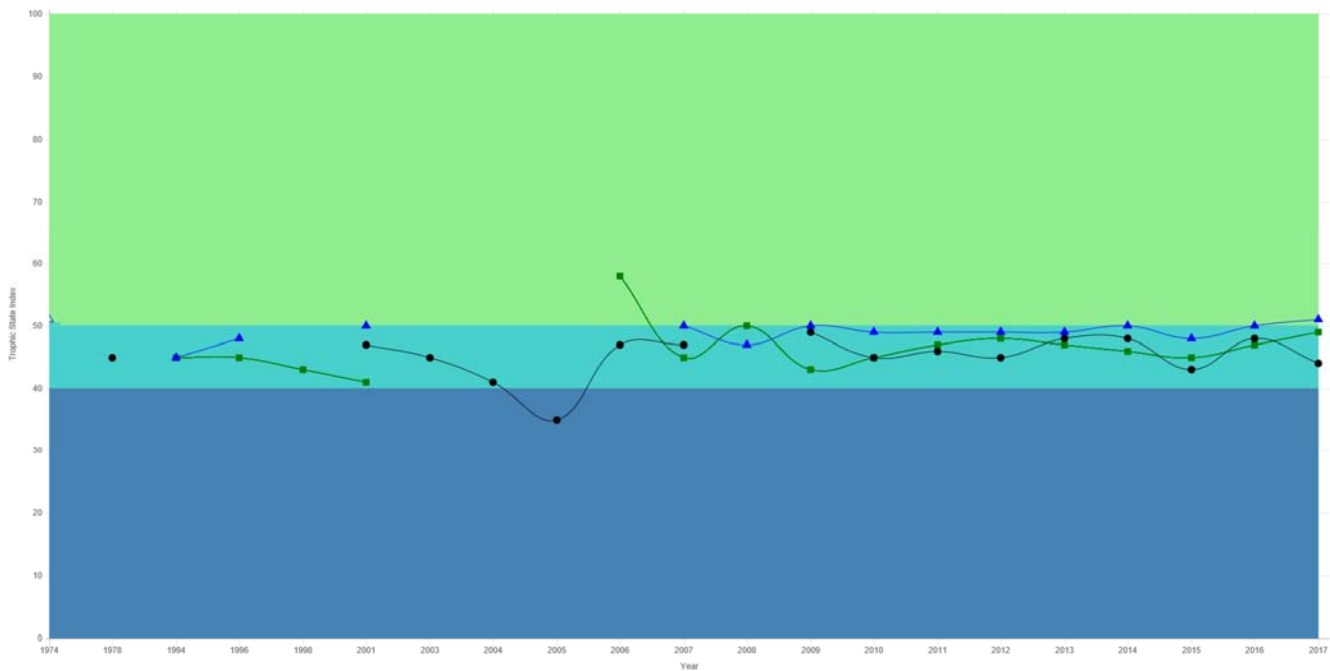
2017 Lake Beulah Water Quality Report

Submitted by LBPIA board member Keith Beren:

Chlorophyll Tropic Index Score (TSI) is 49 for 2017 Lake Beulah

What does this TSI score number mean? The TSI is a score from 0 to 100. Lakes that are less fertile have a low TSI number. The higher the TSI number the more fertile a lake is. Since 1974 WI DNR records for Lake Beulah TSI levels have been in the 40-49 range. This range is a characteristic of a Mesotrophic State, which indicates the lake water is moderately clear, but increasing chance of low dissolved oxygen in deep water during the summer. A Chlorophyll TSI Score range of 60 and above Blue-green algae becomes dominant.

Trophic State Index (TSI) Graph: Lake Beulah



Source: <https://dnr.wi.gov/lakes/clmn/reports/tsigraph.aspx?stationid=653121>

The main reason for this elevated TSI score 49 was the rainfall that contributes to the runoff into the lake. During the month of August the area experienced a tremendous amount of rainfall in a short period of time. The lake level rose, this saturated the wetland area behind both Fred's Tap and Dockside's channel. The water eventually leached out into the main body of the lake changing the water appearance to a root beer –brownish color.

For more detail information see the LBPIA website – water quality section and/or go directly to the WI DNR Lakes.

<https://dnr.wi.gov/lakes/waterquality/Station.aspx?id=653121> (Lake Beulah)

<https://dnr.wi.gov/lakes/waterquality/> (Search for other lakes by County)



COMPARING LBMD TO LBPIA

Lake Beulah Management District (“LBMD”) operates the weed harvesting equipment and is also involved in other matters regarding the health of the lake. It is a unit of government supported by property taxes paid by owners around the lake as well as occasional grants from the state of Wisconsin for specific purposes. It has legal authority to act as necessary to carry out programs of lake protection. The LBMD is governed by a board of commissioners who are elected by District Electors to a three-year term of office. Website: <http://lbmd.org>

Lake Beulah Protective & Improvement Association (“LBPIA”) serves as a watchdog on matters related to lake health. It depends on voluntarily paid dues and donations of its members for its source of income. Membership is open to all. From time to time it will provide financial support to LBMD and other governmental agencies for specific issues deemed to be a threat to the quality of lake health.

LBPIA Board of Directors

- ◆ John Sonderegger, President
- ◆ Keith Beren, Water Quality
- ◆ Joan Huening, Vice President & Marketing
- ◆ Alyssa Klopatek, Secretary & Website
- ◆ Carol Stein, Treasurer
- ◆ Steve Schmitendorf, Membership & Area Chair Network
- ◆ Tom VanDenBogart, Fish & Wildlife
- ◆ Jim Blomberg, Director Nominee spring 2018



Lake Beulah Protective &
Improvement Association

*P.O. Box 153
East Troy, WI 53120*

Visit us on the Web!

www.lakebeulah.org



Our Mission

*The **Lake Beulah Protective & Improvement Association** is dedicated to preserving the natural resources of Lake Beulah and to maintaining an inviting environment for all who use the lake.*

