



# LAKE VIEWS

A publication of the Lake Beulah Protective & Improvement Association

Fall 2021



## IN THIS ISSUE

- Presidential Perspectives..... 2
- Town of East Troy
- Water Patrol Activity..... 4
- The Lake Bottom and You ..... 5
- Close Call on the Lake..... 5
- Does Lake Beulah Influence the Weather Along the Shoreline..... 6
- Editor’s Outlook ..... 6
- 10 Things to Know About Lake Beulah in Winter ..... 7
- What’s Happening on Other Lakes?..... 7
- Website Update ..... 8
- An Unnecessary Risk..... 9
- Historic Homes of Lake Beulah..... 9
- Message from Lake Mgmt District..... 10
- Wave Height Forecasting ..... 10
- Emergency Information ..... 10
- LBPIA Clip & Save Information ..... 11
  - Board of Directors
  - Area Chair Network
- Fall Annual Meeting ..... 12

## Lake Beulah Landmarks: GOAT ISLAND

If you even know where it is, Goat Island, being far away from the shoreline, and somewhat inaccessible, probably never comes to mind as a beautiful landmark of Lake Beulah. That said, you might find interesting that its owners once dreamed of it becoming the *'center of value and attraction'* for the lake community.

Actually, before 1914, it wasn't even an island, but instead one of four bogs, another of which is now part of Beulah Bog State Natural Area. Just to be certain you get the point, you'll want to know that a bog is a freshwater wetland of soft, spongy ground consisting mainly of partially decayed plant matter called peat. Bogs often developed in poorly draining lake basins created by glaciers during the most recent ice age.

What follows is a synopsis of extensive research by Dr. Renee Prell-Mitchell, along with a few recollections of those old enough to have heard first-hand accounts of Goat Island's early days.

*continued, see Goat Island, page 3*

[www.protectlakebeulah.org](http://www.protectlakebeulah.org)

# Lake Beulah Protective and Improvement Association

Member, Wisconsin Association of Lakes

Established 1894

P.O. Box 153 East Troy, WI 53120

The Lake Beulah Protective and Improvement Association (LBPIA) is a member-based organization dedicated to preserving the quality of Lake Beulah's natural resources and sustaining its inviting environment. LBPIA is dependent on annual dues from its members for its funding. All who use and enjoy the lake are welcome as members.

Begun in 1894 as a collective effort of lake residents to address island dam issues, the LBPIA has a long history as an effective organization seeking to assure that the pristine quality of the lake remains for future generations.



## Presidential Perspectives

By Tom VanDenBogart



The first signs of fall, with color changes and cooler evenings, remind us that summer is coming to an end. It was good to see the lake so active and full of life all season long. I'm happy to report it was a safe summer on the waters with no safety events to report.

Next year, we are looking forward to hosting an educational pontoon boat tour event to promote the historical and environmental beauty of the lake. The date of this event will be announced at our upcoming fall meeting to be held at the Town Hall on October 9th at 9:00 AM

Just like the last several years, this year's fish stocking will happen at the end of September. This time we will be releasing 2,000 4" fingerling perch, and 500 6"-8" perch. We also plan to focus on enhancement of fish habitat with the adding of Walleye spawning beds, as well as 'Fish Sticks' (submerged trees) around the lake.

We also continue to set up and prepare \$1,000 grants for lake homeowners for shoreline plantings and other qualifying projects. If you are interested in one of these grants, or want to learn more, please contact us through our website at [ProtectLakeBeulah.org](http://ProtectLakeBeulah.org).

## MISSION STATEMENT

The Lake Beulah Protective and Improvement Association is dedicated to preserving the natural resources of Lake Beulah and to maintaining an inviting environment for all who use the lake.

You can learn more about fish stocking and other activities on the lake through committee reports to be made at our upcoming Fall meeting on October 9th. Then, we will update members on the many other aspects of our beautiful lake and the many things going on. We encourage you to come.

The Fall meeting marks the end of the final term on the LBPIA Board of Directors for Alyssa Klopatek and Keith Beren. On behalf of our entire organization, I would like to acknowledge and THANK both for their 9 years of service to the LBPIA.

Two, new, strong candidates have been identified to fill these now-opening board positions. They will be introduced and proposed for election during our upcoming fall meeting. Come hear their story and let your voice be heard.

Thank you for your continued support in protecting the health and well-being of Lake Beulah for this and future generations! It does take a village...

Tom VanDenBogart  
LBPIA President

## THANKS TO OUTGOING BOARD MEMBERS ALYSSA & KEITH!

As the oldest such lake association in Wisconsin, the LBPIA could not have existed since 1894 without the selfless service of many who have loved and worked on behalf of Lake Beulah. For the past nine years, Keith Beren and Alyssa Klopatek have selflessly served as members of the LBPIA Board of Directors. Most recently, Keith spearheaded Water Quality testing, while over the years Alyssa served as Board Secretary, newsletter & website editor, and marketing chair. Those of us enjoying Lake Beulah today, as well as those to follow in the years to come, are forever indebted to the their stewardship. Thank you for your service!





In 1913, three Milwaukee businessmen purchased 160 acres between Lake Beulah and present day Beulah Bog. Together, they began an incredible project to 'scientifically convert a wild farm into beautiful Beulah Lake property'. In an advertisement promoting a 183-lot development of summer homes they stated,

*'Combined, the favorable location, topography, and other natural advantages, a competent Surveyor and Engineer, a Dredge in the hands of such efficient operators... with \$15,000 to foot the bills and behold the result - Man thinks, plans, works and braves Nature to art at once behaves.'*

Around the bog which became Goat Island, a winding 25' wide, 8,000 foot long channel was dredged to a depth of eight feet. The 'center of value and attraction' for the new Beulah Heights subdivision was to be what the developers called the '**Gondola**' (now Goat Island). The developers promised a springtime of blooming 'weeping willows which skirt the shore of this bewitchingly beautiful Gondola'.

What the developers neglected to consider was that beneath the 33 lots platted on the Gondola was a 28 foot layer of unbuildable peat. (After all, this was a bog.)

The plat map for the Beulah Heights Subdivision shows the island bisected by Valley and Island Lanes, with the opposite side of the channel around the island consisting of 150 additional lots. Asking prices ran from \$40 to \$750.

The developers also planned to open a first class hotel and restaurant serviced by a fleet of passenger launches that would ferry residents across Lake Beulah to and from East Troy, where they would connect with a trolley back to Milwaukee.



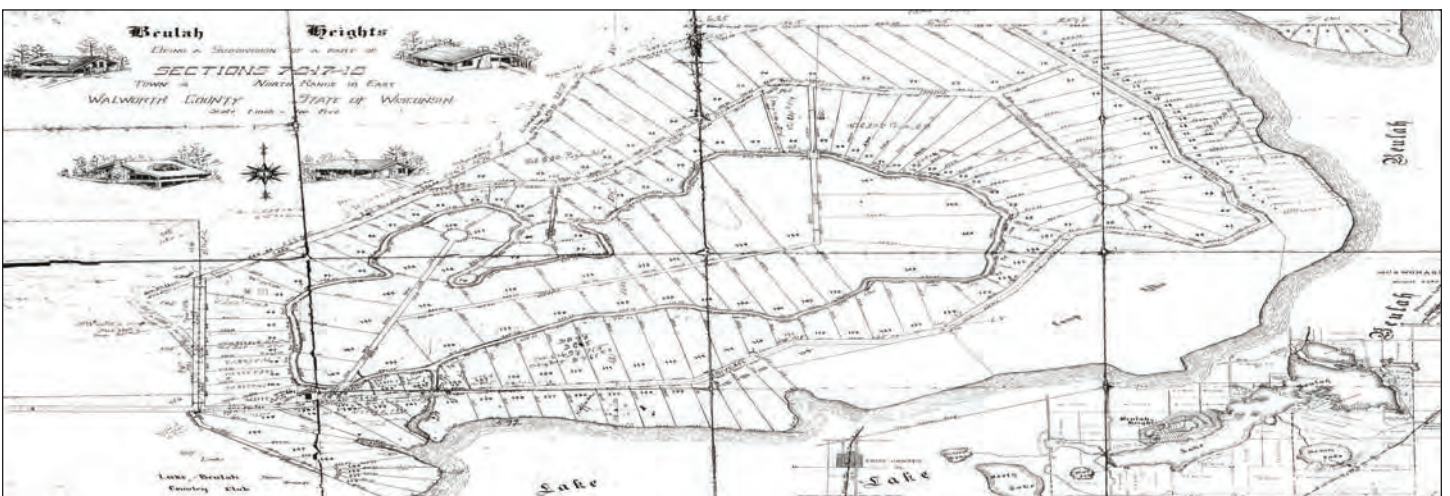
Dredge towed by boat

Dredging began in March 1914, and though it was expected to take only a few months, the project took over a year. Investors began to bail out while the developers bickered. Eventually the partnership dissolved, and by 1921 only one road had been built, part of what is now Beulah Heights Road.

What happened to the dredge? It was abandoned near the channel entrance and its remains were still visible in the 1950s. A friend told me his dad used to take him for boat trips around the channel, stopping to see the dredge. Every year it was further rotted, rusted, and sunk into the muck. By the 1980s it had disappeared into oblivion.

Today, the dredge 'spoils' of 1914 remain piled along the edges of Goat island, silent testimony to broken dreams. But most would probably agree it's better that way. Quoting from Dr. Prell-Mitchell's research,

*The attractiveness of the area was a major advantage, and it did not seem to occur to the developers that 'this garden spot with its spring of health-giving waters, favored by nature with all the requirements of an ideal summer resort', might be diminished by the construction of over 180 houses and five roads.*

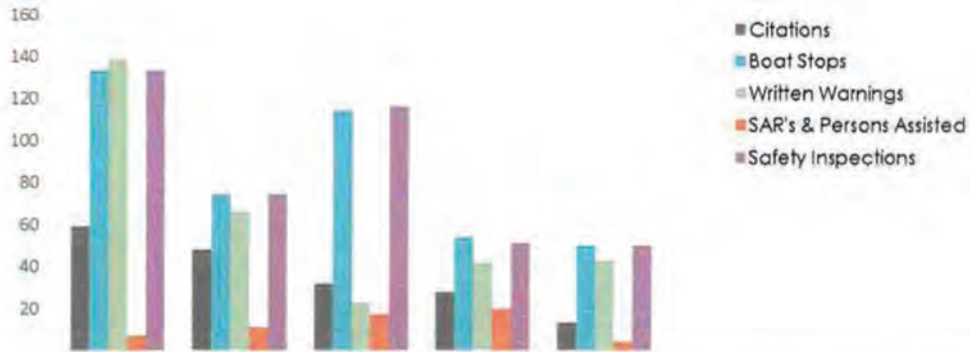


Beulah Heights Subdivision plat map

# TOWN OF EAST TROY WATER PATROL ACTIVITY

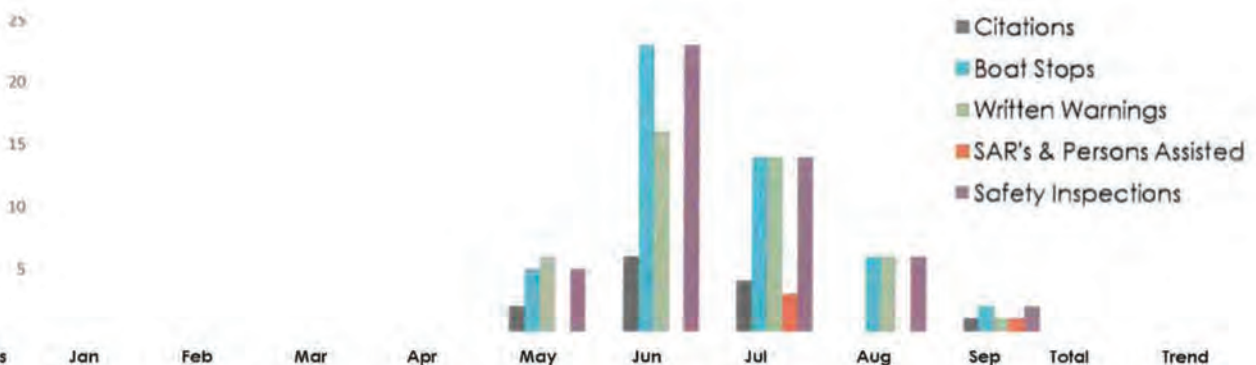
Data submitted by Chief of Police Don Jensen, Sr.

## WATER PATROL ACTIVITY 2017 - 2021(YTD) DATA



Category	2017	2018	2019	2020	2021	Total	Trend
Citations	59.00	48.00	32.00	28.00	13.00	180.00	
Boat Stops	133.00	74.00	114.00	54.00	50.00	425.00	
Written Warnings	139.00	66.00	23.00	42.00	43.00	313.00	
SAR's & Persons Assisted	7.00	11.00	17.00	20.00	4.00	59.00	
Safety Inspections	133.00	74.00	116.00	51.00	50.00	425.00	

## WATER PATROL ACTIVITY 2021(YTD) - MONTHLY



Editor's Note: Modestly, the Chief reports "numbers are down because compliance is up", but trends shown in this data point to the efficient, effective policing by the Town of East Troy's Water Patrol. Thank you to Chief Jensen, Water Patrol Supervisor Tobias Golembiewski, and their crew!

# THE LAKE BOTTOM AND YOU



This photo shows damage to the lake bottom in the channel between the upper and lower parts of the lake. The light area in the middle indicates where a boat propeller gouged out the lake bottom so there is no vegetation. Dark areas on either side are vegetated and undamaged.

Important Message: The driver, and the kind of boat makes all the difference.

Why is this kind of damage bad for Lake Beulah? For a good explanation, please see the Spring 2021 issue of *Lake Views*, which can be accessed online at <https://protectlakebeulah.org/>. The basic message is that ‘what you can’t see, can hurt Lake Beulah.’

The kind of boat you operate dictates how you should be operating it in terms of lake ecology.

- Factors which can influence how your boat affects the lake are the depth of its hull displacement, depth of its propeller, angle/tilt of the boat while underway, speed.
- Floating craft with no engine are unlikely to cause any damage.
- Generally speaking, the smaller your boat and the less the horsepower of the motor, the less damage you are likely to do. Conversely, the larger the boat, and the greater its horsepower, the more careful you need to be.

- Small, light boats with small motors do little damage unless driven through sensitive areas with surface vegetation.
- The deeper your propeller is in the water, the greater the chance it will dig up the bottom. This can be due to the depth of your boat, the length of your propeller shaft, or the trim angle of your boat when underway.
- Outboard motors ‘generally’ have the potential to cause less damage to the lake bottom than stern drives.
- Boats with jet drives can damage the bottom if the jet is vigorously activated in shallow areas.
- The propeller which cuts through the water propelling your boat also can cut right through the lake bottom.
- By design, boats which can take on water in order to intentionally create larger waves can cause damage to both the lake bed and the shoreline. Please operate such boats in the deepest parts of the lake only.

The health of Lake Beulah is up to you. If the water behind your boat gets cloudy after you pass by, you are damaging the lake bottom and hurting the ecology of the lake. Please, for the health of Lake Beulah, keep in mind the boat you are in plays a major role in how you operate it.



Note how far the propeller extends below the bottom of this boat.



Driving with the boat trimmed like this drops the propeller deeper in the water.

## CLOSE CALL ON THE LAKE ~ TEXTING AND BOATING

By Tracey McFadden

I was leisurely cruising in my pontoon boat with my family. I noticed a small speedboat in my peripheral vision coming directly at us from the left at very high speed. The driver was so close I could see she was looking down at what appeared to be her cell phone, unaware of the impending crash. There was nothing I could do. I was so certain of the impact that I yelled out “oh sh- -”. She heard me, looked up and I could see the terror in her eyes. She immediately turned her wheel full left, avoiding a collision by mere inches.



**Editor’s Note:** The dictionary defines a ‘close call’ as a bad situation that almost happened. Over the years Lake Beulah has seen many of those. Maybe you’ve seen one too. If so, send your submission (100 words or less) to the Lake Views editor at [LakeBeulah.LakeViews.Editor@gmail.com](mailto:LakeBeulah.LakeViews.Editor@gmail.com)

## MEMBERS ONLY

Thank you for your support of the LBPIA! You are receiving this issue of *Lake Views* as an exclusive benefit of membership, but your LBPIA Board of Directors believes you didn't join to get something tangible like a newsletter. Rather, the biggest benefit of your membership continues to be an 'absence of negative events' which could destroy the unique, unspoiled nature of our beloved Lake Beulah. You are important!



## Editor's Outlook - A Blast from the Past

By Tom Bernhardt

Dear Readers...

Some of you might know that I previously served on the LBPIA board. Back in 1993, I was VP, and chair of the Education & Public Information Committee. That's when we published Volume 1, Issue 1, of our *Lake Views* newsletter. Thirty one years later, I find myself back at the newsletter!

While I was searching the archives for a 'blast from the past' that might be interesting to today's readers, I came across this note. I feel the same way I did way back then.

For Lake Beulah,

*Tom*



### Editor's Outlook

by Tom Bernhardt,  
Editor

If I could choose just one place to be, there is no question in my mind that it would be a special place on the shores of Lake Beulah. Part of who I am as a person is defined by the lake, and much of my recreation and relaxation is centered on it. Enjoyment of the lake is a lifestyle that I hold dear. As a committed member of the Board of Directors of The Lake Beulah Protective and Improvement Association (LBPIA), one of the ways I have chosen to support the efforts of the organization is through the publication of this newsletter. Communication is a key ingredient in the success of any organization, and it is my hope that this publication will serve to keep its readers informed about issues critical to the continued health, vitality and beauty of the lake. Knowledge is power, and with an informed group of concerned individuals, the lake we know and love will endure for future generations. I hope you find this effort worthwhile. If you have any comments or suggestions, I welcome them.

## DOES LAKE BEULAH INFLUENCE THE WEATHER ALONG THE SHORELINE?

After the recent storms, with downed trees and overturned boats, one has to wonder if the lake had any effect on the damage along the shore. That led to a call to the National Weather Service in Sullivan, WI, and a conversation with meteorologist Cameron Miller. Turns out the lake does impact weather right along the shore.



- Easiest to explain are strong wind gusts which can barrel across the lake unimpeded by the friction of land formations, trees and buildings. This is particularly true for winds coming out of the southwest and blowing towards the northeast, precisely where the most recent storm had the biggest effect.



- Tumbling, spinning air currents known as 'wind shear' are also more likely to occur right along the shoreline.
- Due to higher dew points near the lake, fog is more likely.
- Water stores a lot of heat energy, so it takes a lot of hot weather to warm up the lake. During the summer, temperatures can be much cooler at the lakefront than on the nearby bluffs.
- Before the lake freezes over, there can be very localized, small-scale lake effect snow, again especially when the wind is blowing across the lake from southwest to northeast.
- Lake Beulah has no effect on the formation of thunderstorms. Only very large lakes (Winnebago, Michigan, etc.) can do that.

# 10 GREAT THINGS TO KNOW ABOUT LAKE BEULAH IN WINTER

Adapted from an article by Ted Rulseh in *Lake Tides*, vol.46, No.1 Winter/Spring 2021 from the Wisconsin Lakes Partnership

Lake Beulah is a very different place in winter, but is still a living system. Look closely and you can observe the processes by which the ice forms and ultimately disappears with spring. Meanwhile, aquatic creatures change their habits to make it through until spring. Here are ten things you may not know about frozen Lake Beulah.

**1. IT STARTS WITH STEAM...** Look out on the lake on a very cold October morning and you may see 'steam' rising from the water. A sure sign the water is cooling. This steam fog, or 'water smoke' forms when warm, moist air just above the water condenses into droplets when it meets the colder, drier air above.

**2. ICE REQUIRES COLD STILLNESS...** Lake Beulah won't freeze during windy days. Wave action constantly fractures tiny ice crystals as they form. In these conditions, the water can actually supercool, remaining liquid below the freezing point of 32°F. Then, along comes a cold, windless night and voila! The lake is covered with a thin sheet of ice.

**3. LAKE BEULAH WATER LAYERS...** Beneath the ice, the water has an interesting profile. The warmest (~40°), densest water lies at the bottom. The coldest (~32°), least dense water lies right under the ice. The ice itself, which expands about 10% from its liquid state, floats because it is least dense of all.

**4. LAKE BEULAH IS RICH IN OXYGEN WHEN IT FIRST FREEZES...** Fish and other water creatures depend on a supply of oxygen to make it through winter. Fortunately, beneath the new ice, the lake holds more oxygen than at any other time of the year. At 32°F, water holds almost twice the oxygen it can hold at 80°F.

**5. WATER CREATURES NEED LESS OXYGEN IN WINTER...** During this time of year, the metabolism of cold-blooded fish, frogs, mollusks, and other critters slows way down. They move more slowly, or not at all, thereby conserving the supply of oxygen trapped beneath the ice with them.



**6. DON'T WORRY ABOUT LAKE BEULAH 'BOOMING'...** During winter, the lake can really make some noise, which seems especially pronounced on really cold nights. The eerie sounds result from ice expanding and contracting with temperature changes. Booming and cracking do not mean ice is weakening.

**7. ICE IS REALLY A COLLECTION OF CRYSTALS...** Though we think of ice as a solid substance akin to glass, in reality it consists of crystals organized into hexagonal shapes tightly packed together. These crystals grow from the surface downward. This structure is revealed as ice deteriorates in spring as the bonds between the crystals break down into loosely connected 'candles'. In this condition, the ice is extremely weak and dangerous to walk upon.

**8. SCIENTISTS DISAGREE ON WHY ICE IS SLIPPERY...** The old notion that pressure melts ice to make it slippery has been discarded in favor of two new theories. One is that friction melts the ice. The other is that ice is inherently slippery due to a tiny liquid film that is always present.

**9. ICE IS TOUGH & FRAGILE...** Its 'fracture toughness' is about 1/10 that of window glass, so it breaks quite easily. But when it comes to bending under load, its tensile (flexural) strength is about the same as a pine board across the grain. The WIDNR has the following guidelines for clear ice safety. 4" - Ice fishing on foot... 5" - Snowmobile... 100+" - Godzilla.

**10. ICE MELTS FROM THE BOTTOM UP...** As the weather warms and snow melts off the ice surface, the sun's rays penetrate it and warm the water below, while also warming areas of open water near shore. Warm air above the ice contributes to the thaw, but it's the warming water below the ice that really does the trick.

## WHAT'S HAPPENING ON OTHER LAKES?

Gleaned from lake association website postings

**LAUDERDALE LAKES** - There have been many complaints about **excessive volume** and inappropriate content from boats with elevated speaker systems. They are aware Lake Geneva is considering an ordinance limiting noise from a boat speaker to 75 feet. Warnings would be given prior to citations.

**CEDAR LAKE** - Nearby Deer Lake reported significant increases in **zebra mussels** attached to docks, boats, plants, and rocks in the fall of 2020.

**OKAUCHEE LAKE** - The annual 2021 **Goose Roundup** was cancelled because there weren't enough geese on the lake to meet USDA requirements. They ask residents to report

goose locations again in 2022. ...**Weed growth** has been significant this year due to warmer weather. ...**Muskrats** are being trapped to prevent shoreline damage. A licensed trapper has been on call for the past three years.

**LAKE NAGAWICKA** - Property owners experiencing goose problems can opt into a '**goose egg oiling and/or round up**' performed by the US Department of Agriculture.

**LAKE GENEVA** - Concern about erosion control, increasing phosphorous runoff, and new invasive species in the lake has led to the **formation of a new volunteer group**, 'The Water Alliance', that brings agencies and volunteers together to help address these issues.

## A Note from our NEW LBPIA WEBMASTER

---

Hello Everyone!

My name is Kendra Son, of Kendra Kreative, & I'm excited to be able to work with you to keep your [protectlakebeulah.org](http://protectlakebeulah.org) website and social media pages fresh and up-to-date for members and potential members, as well as all who care about Lake Beulah! Thank you for the opportunity!

A little history about myself - I grew up on Lake Denoon in Muskego and was also part of the Waterbugs Ski Team on Little Muskego Lake. I have a great appreciation for lakes and all the wonderful things they provide! I currently live by the square in East Troy with my husband and two kids (3 and 10 years old). We have a boat and enjoy going out on all the nearby lakes to fish, swim, and enjoy the inviting environment that a lake provides.

I hope you enjoy visiting [protectlakebeulah.org](http://protectlakebeulah.org)! Come on in! The water is fine.

## WHAT'S GOING ON WITH THE WEBSITE

Check out the recent updates!  
To name a few...

- The home page has been updated with new images
- The Lake Beulah Boating Ordinances
- Fishing Links (Fishing Report, Fishing Guide, Fishing License, Fishing Regulations)
- Updated Water Testing results
- Updated Events page
- Safety and Regulations page
- Newsletter page
- Membership and Donation section

---

## WE NEED YOUR HELP

---

To keep the website useful and interesting to our lake community please provide photo's, stories, articles... Anything you think will be of interest. Here are a few examples:

- Current News, including information about:  
The lake, surrounding communities (Mukwonago, East Troy, etc.), promoting local events, news, issues, etc.  
NOTE: These don't always have to be *about* Lake Beulah. Users like to know what else is going on in the area!  
(Notice that one featured article is local news to support a local family)
- Pictures
- Planning for investment in a live-streaming eagle nest camera

Also, please send any comments/suggestions that you think will improve the look/feel/effectiveness of the website, and our social media presence, to [jblomborg511@gmail.com](mailto:jblomborg511@gmail.com)

Thank you in advance for your input and help with LBPIA digital media!

**Editor's Note:** Since the earliest days, people who love Lake Beulah have contributed to the LBPIA being a vibrant, meaningful and effective association. If you have something you think is interesting, it's a lock others will agree. YES! Send things to bolster our electronic presence, and don't forget about also **supporting our print news** which can always be reached at [lakebeulah.lakeviews.editor@gmail.com](mailto:lakebeulah.lakeviews.editor@gmail.com).

**One More Editor's Note:** Some of the most beautiful pictures of Lake Beulah feature the sky. I've sent many of my sky photos to Kendra our webmaster. Please, let's see yours at [protectlakebeulah.org](http://protectlakebeulah.org).



# AN UNNECESSARY RISK

Submitted by John Finney

A few years ago my friend's Dad fell down steps at a college stadium; he tumbled uncontrollably and thought "Is this how my life will end?" He spent 45 days in hospital recovering from multiple broken ribs, a concussion and lacerated kidney.

With a heightened sense of awareness, from the vantage point of our pontoon boat, I began to take note of the many Lake Beulah homes (I count 50-70) that have longer stairways down to the pier without a handrail, and dozens more with shorter stairways. Beautiful homes with elders and kids enjoying the lake, with no hand rail for safety. The funny thing is, nearly every pier stairway has a rail. Nearly every stairway in your home has one too (required by code), yet the 20-30-40 steps to the lake are somehow exempted from that code...very odd.

I concluded it's just not one of those things you think about, until it's too late, much like an insurance policy, seat belt or air bag. However if you Google "Falling down stairs" you'll see that every year there are one million injuries and 12,000 deaths, a leading cause of ER visits from accidents at home.

Earlier this summer I decided to at least try to increase awareness by leveraging social media (see FaceBook *Lake Beulah Lake Life*) and gathered a small team of industrious high school kids in need of summer work (and now Grant, a college kid who studies safety engineering) to promote



*Would this beautiful walkway be safer if it had a railing?*

and install a very cost effective, customized, rail system... two have been successfully installed, resulting in two very happy customers...but we've only scratched the surface.

Our first customers, Debra and Randy Dunn, wanted a handrail for an elderly family member to get to the pier. "Now we all use it all the time," Debra said. It's a fact, when there's a rail, you'll use it.

The old term "Safety never takes a vacation" is true, and falling down stairs only takes once to learn a hard lesson. Is it worth the risk? If you'd like to find out what might be done at your place, feel free to contact John Finney who can also give you pricing information. Be safe. Install a handrail.

## HISTORIC HOMES OF LAKE BEULAH

*(Much here was gleaned from the LBYC 100th Anniversary Yearbook by Marcy Bach)*

Among the 27 residents listed at Upper Lake Beulah in 1895 was W. Furness Hatley, Chicago, the first commodore of the newly formed Yacht Club. Mr. Hatley likely was also active in the formation of the LBPIA.

Along the south shore, "Pastime Park", as Hatley's 70 acre estate was named, is believed to have been purchased from Homer Brooks.

There is some likelihood that in 1942 the property was part of a 90 acre purchase by the Morellis that included a working farm. It was the Morellis who restored the 13-room house and screened in the porches.

At that time, there were no houses directly across the lake from the property, and an early riser might see bears drinking along the shore.

Those fortunate to have been on Lake Beulah in the 1960s might recall seeing and hearing dairy cows along the shore just east of the house.



*The Hatley-Morelli Home*

Editor's Notes:

- After the Fall 2020 issue of *Lake Views* published a map showing the bay off the public launch being known as Hatley's Bay, some have wondered about the name. This article is for you, and should clear up that question.
- The stately home of Homer Brooks' brother, Seymour, still stands on Hwy J, approximately across the road from B'nai B'rith Beber Camp. It was the pleasure of this writer to have stayed there when it was a bed and breakfast.

## A MESSAGE FROM THE LAKE MANAGEMENT DISTRICT



### From the desk of...

DAVE BITTER, CHAIRMAN | LAKE BEULAH MGMT DISTRICT

On August 23, the annual meeting of the Management district was held. I was amazed and gratified by the tremendous turnout for the meeting. I was so pleased to see such a turnout to assure that our Lake District election was truly representative of the will of the people. Chris Kubicek and Valerie Johnson were re-elected to an additional three-year term on the board. They join myself, John Becker, and Stan Alger as the other elected members. In addition, Rick Stacey represents Walworth County and Greg Thomas represents the town of East Troy. It was also a welcome vote of confidence for the board, all of whom are tireless in the determination to protect Lake Beulah. I am truly honored to represent them as chairman. I wish to extend my most hearty thank you to all of the Lake Beulah residents that turned out.

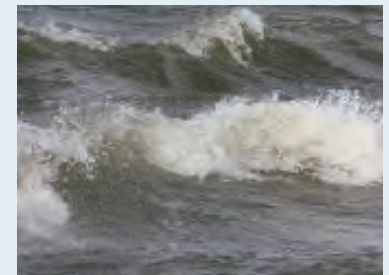
We still have several challenges ahead for the coming year. The largest and most important is the court case to overturn the county denial of a special use permit for the proposed Hotel Beulah. The court dismissed our request to dismiss the suit and set the following dates: Plaintiff brief due September 13, Our brief must be filed by October 29, Plaintiff's reply brief is due November 15. The court will rule on Jan 6, 2022. That is all that we know as of now.

Next year will bring the usual challenges and housekeeping changes. Pumping of well # 7 by the village is still being watched closely, as well as our water quality. We expect to have a report on the lakebed monitoring project as well. To keep you better informed the District is planning a spring newsletter. I urge all of you look for it and to attend one or some of our meetings to see your district in action.



## WAVE HEIGHT FORECASTING

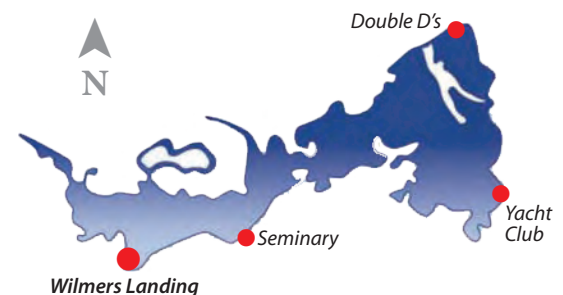
With Wisconsin ranking near the top (5th) in registered recreational vessels, an experimental new service has been launched by the National Weather Service to aid boaters on inland lakes in southeastern Wisconsin. That includes Lake Beulah. Point your web browser to <https://www.weather.gov/mkx/inland-lake-waves> for among other things, updated information on the projected size of waves and surface water temperature, two things not available on typical weather apps.



## Emergencies

Please use courtesy and common sense in operating your watercraft, ATV's, snowmobiles. Avoid creating a hazard, threat, stress, or irritant to others and yourself, to wildlife and to the lake environment. Respect others by turning down the volume of music or other amplification.

You can report situations to the Town of East Troy Police on the lake or call their non-emergency number: **(262) 642-3700**.



**For all EMERGENCIES: DIAL 911**  
**Identify LAKE BEULAH and ACCESS POINT** (see map)

Try to provide the police with as much information as possible such as boat type, color, number of occupants, location where observed, and registration number. Note: when on the lake the Police also monitor the emergency Marine Channel **VHF CH72**.

### Board of Directors

### Area Chair Network

Serving on a voluntary basis, the Board of Directors are elected by the LBPIA membership. Board terms are three years; board members can serve a maximum of three terms (nine years).

Tom VanDenBogart .....	President / Fish, Game & Wildlife
Carol Stein .....	Vice President
Steve Huening .....	Treasurer
Steve Schmitendorf .....	Membership, Communications & Area Chair Network
Keith Beren .....	Water Quality
Jim Blomberg .....	Website
Alyssa Klopatek .....	Secretary / Web
Brian Bellew .....	Marketing
Tom Bernhardt .....	Lake Views Newsletter Editor
John Sonderegger .....	Past President

**Lake Views** is published periodically by the Lake Beulah Protective & Improvement Association. Every effort has been made to provide correct and accurate information. There is, however, no guarantee as to the total accuracy of information included. The opinions expressed are not necessarily those of the LBPIA Board of Directors. Individuals who wish to submit articles, artwork, poetry, calendar items or photography may send contributions to **LakeBeulah.LakeViews.Editor@gmail.com**. Articles in Lake Views may be reprinted or reproduced for further distribution, with acknowledgment to the Editor.

Area Chairpersons are committed Lake Beulah residents who serve as the primary contacts to the Association. They are your friends and neighbors, familiar faces who understand the issues surrounding your community. Should you have an interest or concern regarding the lake, please reach out to your area chair or a member of the board through [ProtectLakeBeulah.org](http://ProtectLakeBeulah.org). Check (✓) YOUR Area Chairperson:

- Beach Rd & Deerpath Rd  
Debra Dunn
- Beulah Heights Rd (W2002-W1900) & Bavaki Way  
Maureen & Tim McCarthy
- Beulah Heights Rd (up to W2002)  
Richard Stenglein
- Beulah Park Rd  
Dave & Peggy Krueger
- Byrnes Ln & Romadka Park Rd  
Roy Gerloff
- Country Club Ln & Austin Rd  
Steve & Mary Schmitendorf
- County Road J  
Don Tacke
- East Shore Rd (Beach Rd to North end of Beulah Park Rd)  
Debra Dunn
- East Shore Rd & Thistle Ln  
Wendy Bitter
- Horseshoe Ln & East Shore Rd (to Beulah Park Rd)  
Chris Mackey & Karen Peters
- Island Drive  
Kim Rosenmayer
- Kings Pkwy & Kings Ln  
Chrissy Kubicek
- Lake Rd & Windy Way  
John & Susan Brown
- Marsh Rd & Millsite Rd  
Don Tacke
- Oakwood Ln & Its A Little Rd  
Don Stein
- Pastime Ln & Grandview Dr  
Open: Volunteer needed
- South Shore Dr (up to Humphrey Ln)  
Norm & Rose Sass
- Southshore Dr (west of and including Humphrey Ln  
to Beulah Park Rd)  
Carrie Franzene
- Stringers Bridge Rd, New Deal Ave & West Bay Rd  
Michol Ford
- Wilmer's Grove Rd, Wilmers Point Ln & Wilmers Landing  
Val Johnson

**IN THE NEXT ISSUE**  
Lake Views will be published again in the spring. What do you want to read about? Send your ideas to the Lake Views editor at **LakeBeulah.LakeViews.Editor@gmail.com**



FIRST-CLASS MAIL  
U.S. POSTAGE  
PAID  
MILWAUKEE, WI  
PERMIT NO. 3707

**Lake Beulah**  
**Protective and Improvement Association**  
*Established 1894*  
P.O. Box 153 East Troy, WI 53120

Return Service Requested



Follow Us on Facebook and Instagram

[www.protectlakebeulah.org](http://www.protectlakebeulah.org)



## THE LBPIA FINDS STRENGTH IN ITS MEMBERS!... THAT'S YOU!

### FALL ANNUAL MEETING

***Please join Us...***

**SATURDAY, OCTOBER 9TH, 2021 @ 9:00 AM**

Pavilion in the park adjacent to the East Troy Town Hall... You may want to BYO lawn chair.

*GOOD NEWS! Coffee, orange juice and donuts will be available once again!*

**Guest Speakers:**

- **Heidi Bunk** - Walworth County Shoreline Zoning Administrator

**Business will include:**

- Election of board members
- Water quality measurements
- Fish habitat and stocking plans
- Partnership initiatives with significant value about to get underway
- Renewed commitment to the sensitive areas of the lake
- 2022 Schedule of events

**WHAT QUESTIONS DO YOU HAVE?**