



LAKE VIEWS

A publication of the Lake Beulah Protective & Improvement Association

Spring 2023

LOST GOLF COURSES OF LAKE BEULAH

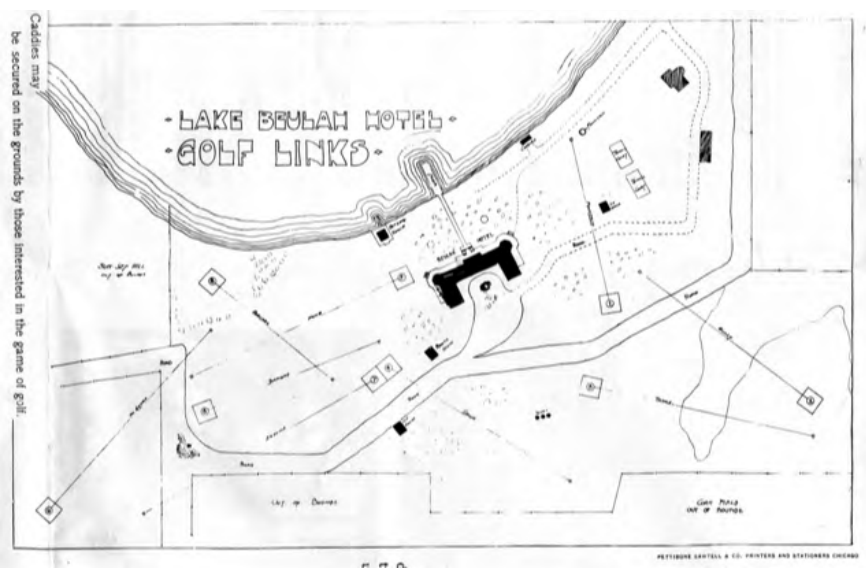
Did you know there once were three golf courses around the Lake? They are all gone. If you're a regular reader of *Lake Views*, you've already read the interesting history of the 9-hole course at Country Club Lane, so let's find out about two other courses that are now but a (faint) memory.



IN THIS ISSUE

- Presidential Perspectives..... 2
- Boating Safety 3
- Loosestrife - Native Plant Confused With Invasive..... 4
- Spongy Moth Coming 5
- Complacent? 5
- Wake Boating 6
- Wake Boat Damage Gets Attention.... 6
- Voices Carry 7
- Boat Launch Ordinances..... 7
- 2023 LBPIA Goose Mitigation Program 8
- Lake Beulah Country Club Coming Back to Life..... 9
- Stairway, Walkway, Tram 9
- A Message from the Lake Management District..... 10
- Look at the Sky 10
- Emergency Information 10
- LBPIA Clip & Save Information 11
 - Board of Directors
 - Area Chair Network
- Spring Annual Meeting 12

First, there was a 9-hole golf course at the Beulah Hotel in the vicinity of today's Beulah Park Rd. A circa 1901 promotional brochure touts the **Lake Beulah Hotel Golf Links**, as consisting of nine holes covering a course that is very sporty, and equal to any in the northwest. Caddies may be secured on the grounds.



The Beulah Hotel had a golf course, but its layout criss crossing the entire property is evidence golf was not a high priority of the owners. Among other 'amusements' advertised were lawn tennis, riding and 'driving', boating, fishing, billiards, pool, dancing, vocal and instrumental concerts, children's parties, baseball, and regattas.

continued on page 3

www.protectlakebeulah.org

Lake Beulah Protective & Improvement Association

Member, Wisconsin Association of Lakes
P.O. Box 153 East Troy, WI 53120

Established
1894



The Lake Beulah Protective & Improvement Association (LBPIA) is a member-based organization dedicated to preserving the quality of Lake Beulah's natural resources and sustaining its inviting environment. LBPIA is dependent on annual dues from its members for its funding. All who use and enjoy the lake are welcome as members.

Begun in 1894 as a collective effort of lake residents to address island dam issues, the LBPIA has a long history as an effective organization seeking to assure that the pristine quality of the lake remains for future generations.

MISSION STATEMENT

The Lake Beulah Protective & Improvement Association is dedicated to preserving the natural resources of Lake Beulah and to maintaining an inviting environment for all who use the lake.

Presidential Perspectives | By LBPIA President Tom VanDenBogart



Like you, I am so excited to see the first signs of spring! With spring comes the planning for our May 13th membership meeting from 9-11AM at the East Troy Town Hall. In addition to all the usual informative updates, we will celebrate partnerships with organizations and camps that share a love for, and interest in protecting Lake Beulah. There will be a panel discussion sharing ideas of how we work together to achieve the mission of preserving the beauty of Lake Beulah! We will further celebrate following the meeting with a cookout and potluck to further the conversation.

This is my last full year as president of the board, and I'd love nothing more than to assist with creating a legacy that helps ensure the long-term beauty and health of the lake. Through strong partnerships with the camps and organizations on the lake, I believe Lake Beulah can become recognized and rated as a premium treasure of Wisconsin. This premium rating would include being ranked as one of the premier resource lakes of Southern Wisconsin, opening up additional opportunities for grant funding to help support environmental preservation of our lake. Come to our membership meeting to learn more.

I continue to be proud of our 'results-focused' board members and the benefits they bring to our organization and the lake.

- We are completing a water quality dashboard which can be viewed at our www.ProtectLakeBeulah.org website.
- New water testing equipment has been purchased that will increase and improve the amount of data we generate to monitor lake water quality.
- Coordinated with federal authorities through the LBPIA, the upcoming goose mitigation project is funded completely by program participants.
- Currently underway is the digital scanning of all documents from the past 100+ years. This will result in a searchable database to not only archive, but also make useful a rich historical record created over the years going back to the conception of our organization in the 1890's.
- And our fish stocking program will stock fish again this coming fall. The details are being defined.

Also, I would like to encourage all members to go online to our website and renew your membership. I would also like to personally thank the many members that go above and beyond by making additional contributions! THANK YOU!! We really appreciate your continued membership, so you will be receiving an annual dues reminder letter in May.

Again, the spring meeting will be held at the East Troy Town Hall at 9:00AM on May 13th. This meeting is open to all friends of the lake. Please join us. I hope to see you at there.

Lost Golf Courses of Lake Beulah

continued from page 1

Then there was a 9-hole course that serves as namesake for today's Country Club Lane. First evidence of the Lake Beulah Country Club is found in a 1908 property abstract. This course was sold and subdivided in 1923.



JB Murphy's Golf Grounds

A third 'lost' course is far more obscure, and may have been forgotten had it not been for this 1917 postcard showing 'JB Murphy's Golf Grounds'.

Where were these golf grounds? A keen eye will pick up clues in the photo, but the perspective is not one that is recognizable to most. An old 1907 plat map lends a really big hint. There it shows JB Murphy owning a big swath of land in the vicinity of today's Oakwood Road, and It's A Little Road. Turns out that is precisely the location of the landmark 'DUNN FARM'.

Previous research tells us that in 1901 Mr. Murphy built the English Tudor estate as a wedding present



Country Club House Circa 1912

for his stepson Harold Dunn and his bride. (Skilled laborers were paid \$1/day, with lumber coming up from Chicago.) Interestingly, as late as 1917 the course itself was still known by the name of his stepfather JB Murphy even though apparently it was Mr. Dunn who built the golf course,

So, there you have it. Three lost golf courses, right on the shores of the lake. Now you know.

EDITOR'S NOTE: A fourth golf course, the Lake Beulah Country Club, is being resurrected this spring. Be sure to read about it on page 8.

BOATING SAFETY

With warm weather on the way, many will soon be out on the water in our boats. And while the air may be quite warm, the water in Lake Beulah will take a while to warm up, increasing the danger of hypothermia to anyone who falls in or capsizes. Wearing a life preserver won't keep you from getting cold, but it could save your life.

According to DNR records, in 2021, there were 25 boating fatalities reported in Wisconsin, tying 2018 for the most in the last decade. 84% of the victims were not wearing a personal flotation device. 91% of the victims were male; the average age was 46.

The DNR does not track drownings, but does keep data on fatalities related to recreational activities like boating. Year after year, failure to wear a PFD is cited in the majority of boating fatalities.

Today's PFDs are more comfortable, stylish and lightweight, but most importantly more effective. Some new models are inflatable, affording greater flexibility and mobility, as well as being much cooler in warm weather.

I recall wearing a 'life belt' when waterskiing back in the day. I even got a ticket for forgetting to put it on.

Personally, I am STILL learning I am not invincible... A couple of years ago, I was out sailing and capsized, completely upside down! Where was my life jacket? In the hull, and totally useless. Thankfully, some Good Samaritans came along and gave me a hand.

LOOSESTRIFE - NATIVE PLANT CONFUSED WITH INVASIVE

by Jennifer Thorsch



Swamp loosestrife Photo by Peter M Dziuk

EDITOR'S NOTE: Your LBPIA is always on the lookout for potential threats to the lake. Breaking news on the sighting of a new invasive plant triggered an investigation. Hence this report. For more information, see www.protectlakebeulah.org.

Lake Beulah is home to native and non-native species of plants and animals. Encouraging the native species is a biologically noble endeavor. However, non-native species can add to the enjoyment of our environment when they do not become invasive and outcompete the native species.

Why should we care about non-native species? They might be pretty or a valuable food source for humans and animals. As long as the non-native species do not outcompete the native species, the non-native plants or animals do not pose an ecological risk. However, if the non-native species become invasive—spreading and outcompeting the native species—there is cause for concern.

Why? Invasive species can change the food web in an ecosystem by destroying or replacing native food sources. This change can impact the native species that gather nectar, eat, or utilize the plants for nesting. The invasive species may provide little to no food value for wildlife. Invasive species can also alter the abundance or diversity of species that provide important habitat for native wildlife.

Lake Beulah is home to several species of loosestrife. Two of the most common are swamp loosestrife, the native species, and purple loosestrife, the non-native and invasive species.

Lake Beulah has a healthy abundance of the native swamp loosestrife which flowers between July and September. The flowers are pinkish purple on stems up to 10 feet in length, but usually about 3-4 feet above the waterline. An abundant stand of swamp loosestrife can be seen in Broad Bay on the Eastern Shoreline.

The non-native purple loosestrife originated in Europe and Asia. It was first introduced into North America in the early 1800s for ornamental and medicinal purposes. Purple loosestrife looks very similar to swamp loosestrife.

Why is purple loosestrife so problematic? The species can quickly form dense stands that completely dominate the area excluding native vegetation. Purple loosestrife can spread very rapidly due to its prolific seed production; each plant can produce up to 2.5 million seeds per year

How can the purple loosestrife be controlled?

The three methods employed for controlling purple loosestrife include 1. digging, hand-pulling and cutting, 2. chemical and 3. biological control. See www.protectlakebeulah.org for detail on these techniques.

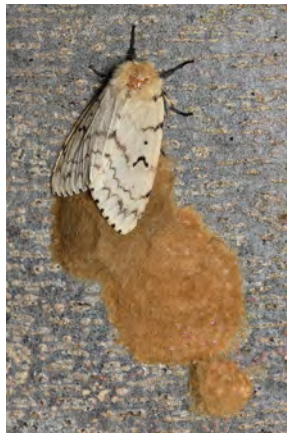
The three control methods will not completely eliminate the invasive purple loosestrife, but each method will help in decreasing the spread of the species.

LBPIA will continue to identify areas where the purple loosestrife is located and we will work with homeowners, camps, and the LBMD to select the method or methods that will help to control the invasive species.

SPONGY MOTH COMING?

Much of Lake Beulah's charm is defined by its unique shoreline, with one of the defining characteristics being the many and varied trees along its banks. Unfortunately, there is a killer insect poised to severely weaken trees and shrubs around the lake.

First appearing in Wisconsin in the late 1980s, and formerly known as Gypsy Moths (name changed for social correctness) these non-native/invasive insects can wreak havoc on trees. Voracious eaters, the larvae (caterpillars) hatch from egg clusters in late April/early May, climb out on branches, and strip them of their foliage at an alarming rate.



*Spongy Moth Laying eggs
(PJ Liesch, UW-Entomology)*

Most healthy trees can withstand this defoliation once, but outbreaks in consecutive years can weaken trees to the point they become more susceptible to other stresses.



*Spongy Moth egg cases
(New York State Department of
Environmental Conservation)*

Research by the University of Wisconsin Insect Diagnostic Lab indicates Spongy moth numbers are rapidly increasing in Walworth County. Last summer, a DNR Forester visited Lake Beulah and remarked that they are very near. A subsequent

drive along Stringers Bridge Road showed a few denuded trees in July.

Fortunately, control measures are available, with several options including mechanical, biological, and chemical aerial spraying available. As you can imagine, it's complicated. For more information on Spongy Moths, including their control, see our website www.protectlakebeulah.org.

Over the years, Lake Beulah has experienced many invasions by non-native species. Buckthorn and honeysuckle have choked its woodlands. Eurasian Water Milfoil and zebra mussels have defiled its water. Its wetlands have to cope with invasive loosestrife.

Now, this beautiful, jewel of a lake faces yet another scourge. But just as with the others, we as stewards of the lake have the opportunity to help see it through. That is what the Lake Beulah Protective & Improvement Association has always been about. Thank you for your membership and continued support. Together Everyone Achieves More (TEAM).



COMPLACENT?

When I think about Lake Beulah, it's almost always as a quiet, tranquil place of beauty. Sometimes, the water is 'like glass', with not a sound to be heard save the call of a distant bird. At times like this, it's hard to even imagine all is not totally right with this little bit of heaven. But since I realize ignorance is bliss, in my heart I know things may not always be as they appear.

Since the earliest days, members of the LBPIA, people like you, have joined ranks to battle the oftentimes unseen things that could destroy our special place. That's what the letter P in LBPIA is all about. Just imagine all the forces our beautiful lake has encountered over the last 129 years. We owe a debt of gratitude to those who came before us. Now, it's our turn.

If we care about what happens to Lake Beulah, we can't afford to be complacent. Though things may be calm on the surface, there are and always will be threats to what we value as lovers of the lake.

It doesn't take much to recognize how land surrounding the lake is under increasing pressure of development. It is also clear that societal expectations for water recreation are changing. The elephant in the room is the ongoing threat of irreversible environmental damage.

Can we afford complacency? Your LBPIA membership shows your answer is 'no', but did you know less than 50% of riparian owners are members? I welcome your ideas.

lakebeulah.lakeviews.editor@gmail.com



WAKE BOATING

Looks like fun, doesn't it? Wake boats can make waves up to four feet high. You can surf, just like on the ocean. But to do this, you must heavily weight the boat, adding up to 5000 lbs. of water to drop the stern of the boat and "plow" the water. This causes prop wash to jet downward at 35 to 40 degrees below horizontal when wake boats operate in plowing mode. This downward prop wash churns the lakebed up to 16 feet deep. What can this do to the lake? Let's see.



Lake Beulah has a bottom covered in sediment accumulated over thousands of years. The "plowing" and prop wash tears up water plants and churns bottom sediment into the water. This causes vastly more damage than from ski boats. Ski boats ride on plane and do not "plow" the water and do not churn sediment.



Driven irresponsibly, ballasted wake boats act like a fire hose on the lake bottom, ripping up plants and churning sediment. This makes the lake murky, destroys fish habitat and spawning grounds and causes phosphorus and other nutrients to be mixed into the water promoting algae blooms and encouraging invasives.

WAKE BOAT DAMAGE GETS ATTENTION

Sensitive to concerns of citizens, members of Wisconsin's Natural Resources Board (NRB) have called on the DNR to take up wake boating as part of its 'public trust' responsibilities to protect natural resources.

Specifically designed to create large waves, wake boats have special ballast tanks capable of holding several thousand pounds of lake water. Lake Beulah has seen a marked increase in the use of these boats.

With growth in popularity, the boats and their activity are getting more attention. According to testimony at recent NRB meetings, issues arise when the increased wake poses a danger to other boaters, habitat, and wildlife. Concern has also been expressed that prop wash could damage lake bottom vegetation, and that ballast tanks themselves pose a serious potential for the transfer into the lake of aquatic invasive species.

For its part, the DNR is urging all boaters to be aware of problems and risks caused by boat wakes, and to take steps to reduce big wakes. Two slogans, 'Others are sharing the waters - keep wakes in check', and 'Own Your Wake - for everyone's sake.' have been used in DNR messaging.

Several state statutes currently apply to wake boats, with DNR wardens having direct authority to enforce them. (The first three can result in a civil forfeiture.)

1. All boats are required to proceed at no wake speed when within 100' of any shoreline, dock, or pier.
2. No person shall operate a motorboat so as to

approach or pass another boat in such a manner as to create a hazardous wake or wash.

3. Anyone who removes a boat from any inland lake or outlying water is to immediately drain all water including from ballast tanks.
4. A potential criminal violation of 'negligent operation' could also result through a statute stating 'no person may operate or use any boat in a careless, negligent or reckless manner so as to endanger that person's life or property or the life, property or person of another'.

According to the DNR boating law administrator, municipalities may enact local boating ordinances in the interest of public health, safety, or welfare, including the public's interest in preserving the state's natural resources. Examples could include an outright ban on wake boats, establishing areas with reduced speed zones, or limiting boating activities by time of day. Such laws would be the responsibility of local authorities.

According to one NRB member, "This is an issue that is developing rapidly and it might be a lot more effective and efficient to address it on the front end, instead of presented with problems down the line."

- Adapted from an article in *The Milwaukee Journal Sentinel*, 12/18/2022

Editor's Note: In your opinion, does wake boating pose any problems for Lake Beulah? Have you any specific examples? Please submit your thoughts to lakebeulah.lakeviews.editor@gmail.com

VOICES CARRY

By Brian Bellew

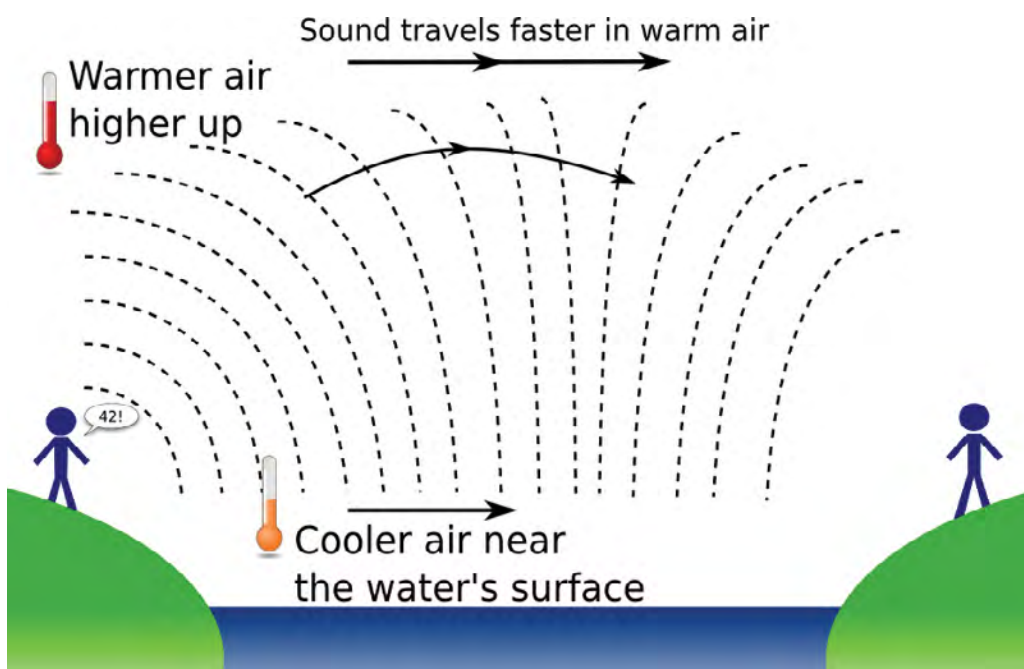
Many of us who spend time on or near Lake Beulah have observed that sounds seem to carry better over water. Why is that?

Some quick Google research yields the following (edited) insights (source for quoted material and graphic: Sedee posting in Physics at <https://inspiringscience.net/2013/08/14/no-secrets-by-the-lakeside-how-water-affects-sound/> on August 14, 2013).

“[Maybe] the lack of obstructions might have something to do with it. The flat surface of a body of water offers few obstacles to sound — there aren’t any trees or rocks or buildings in the way. That probably helps a bit, but it turns out it’s not the real reason. If it was, you’d experience the same effect if you were standing in a meadow or a field. The real reason has to do with the way air temperature affects traveling sound waves.

The sounds that we hear are pressure waves traveling through the air. The speed of sound depends on the temperature of the substance it is traveling through. Sound travels faster in warmer air.

When you make noise, sound waves travel away from you in every direction, making an expanding sphere. Since the air just above an open body of water is cooler than the air slightly higher up, the speed of sound is slightly lower above the water’s surface. The temperature gradient above the water translates into a gradient in how fast sound travels; sound waves further from the water will be faster than those below them. The difference in speed causes the expanding sphere of sound to change shape, flattening into a wall or even focusing the sound downwards. That’s why sound travels further over water: less is lost up into the air, meaning more of it ends up in your ears — or your neighbors.”



BOAT LAUNCH ORDINANCES

Lake Beulah is a beautiful lake, and a highly desirable destination for transient boaters, some of whom come from great distances. This has led to concern about the ordinance limiting the number of legally launched boats to the capacity of the parking lot at the public launch. The Town of East Troy ordinance regulating boat launches was developed in conjunction with a study done by the Wisconsin DNR, and has been in place for many years. There are no plans to increase the number of launchings allowed.

With this knowledge, let us all be mindful of our (potential) exaggerated noise impact from conversation and music whether on the land near--or on the shores and waters of--Lake Beulah. A little bit of thoughtfulness and respect will go a long way in ensuring that all lake users can enjoy this beautiful natural resource in peace for years to come. As the singer from the American rock band ‘Til Tuesday said in their 1985 hit song: “Voices Carry”.

LAKE BEULAH COUNTRY CLUB COMING BACK TO LIFE



There's an old song with lyrics, 'you don't know what you've got 'til it's gone.' (Big Yellow Taxi, 1970) Many around the lake would likely nod in agreement when they imagine that the Lake Beulah Country Club almost went the way of the three 'lost golf courses' featured in this issue of Lake Views. The beautiful, rolling countryside could have easily fallen to a land developer's skid steer.

But thanks to the foresight and civic mindedness of a local family, the LBCC is in the process of reestablishing itself as a destination for family fun. That's the vision of course PGA professional Ken Collett who describes the effort as a 'work in progress', and in that regard he reminds us that establishing high quality greens and turf takes time.

Beginning as a 9-hole course, Mr. Collett and other members of his support team are also envisioning a practice facility and driving range readily accessible to area residents, so as to conveniently fit around their lake activities. Foremost in their minds is to honor the long

time stewardship of the property by the Jacobs family as previous owners.

One more thing... Many are probably wondering about the clubhouse restaurant. You'll be glad to know that Mr. Collett remarked that 'yes!', there are plans to reopen for Friday fish fries, hopefully under the tutelage of the previous chef.



2023 LBPIA GOOSE MITIGATION PROGRAM



Driven by overwhelming support at our Fall 2022 Member Meeting we are coordinating with the USDA to carry out this program some time in June/July 2023. This program is fully funded by participants. If you would like further information and/or would like to participate, please visit our website (www.protectlakebeulah.org).

WHAT IS YOUR FAVORITE LAKE BEULAH STORY?

OK... The lake is your favorite place. How about telling us your favorite Lake Beulah Story? Send them to lakebeulah.lakeviews.editor@gmail.com

STAIRWAY, WALKWAY, TRAM

by Darrin Schwanke, Code Enforcement Officer, Walworth County

EDITOR'S NOTE: Lake Beulah's character is in part defined by its topography. Steep, sloped shorelines, in addition to providing a 'bird's eye' view from the top, also help to protect the lake from runoff from surrounding lands. Governing bodies have also weighed in on what can be done to make the steep climb easier. Here's a report from Walworth County.

Not all lake lots are created equal and safe access to the lake is important. The Walworth County Shoreland Zoning Ordinance allows one stairway, walkway or rail system in the shore yard within the access/viewing corridors. The structure shall be located so as to minimize earth disturbing activities and shoreland vegetation removal during construction. The structure can be no wider than 60 inches with open railings permitted only where required by safety concerns. If landings are built into the structure they shall not exceed 25 square feet in area.

Property owners often ask if it is possible to have a second access to the shore. If a disabled person resides on the parcel and can show that a structure with smaller dimensions would not be adequate to allow a disabled person access to the residence or pier, a special exception could be granted. The special exception would go before the County Board of Adjustment (BOA) with a recommendation from the Township. The permit shall be temporary, may continue only as long as disabled persons reside on the parcel and shall be removed not more than 30 days after the disabled person vacates the parcel.

In some rare cases property owners already have two access structures (staircase and tram). Two access structures would be illegal unless a special exception or variance from Board of Adjustment have been previously granted. For those structures without BOA approval they can only be replaced in the exact same footprint and envelope, if both have existed for more than 10 years. If doing any land disturbance to replace these structures, an erosion control permit and possible Town building permit would be required.

Hopefully this sheds some light on structures that are allowed to access the shoreline. As you can see there are several variables that come into play regarding these structures. If you have any questions regarding this or any other zoning questions about your property, please contact the Walworth County Land Use and Resource Management Department.



SEASONAL REMINDER

We all know that a long cold winter makes that first boat ride extra special!

As we look forward to a long summer of boating, please remember that the East Troy police are willing and able to help keep Lake Beulah safe for everyone, so please make sure to report any of the following:

- Excessive speed
- Excessive noise
- Failure to maintain safe distances

Also, as we try to maintain the health and safety of the lake, it is useful to note if and when the number of boats on the lake seems excessive.

Together, we can make sure Lake Beulah remains a safe and enjoyable place!

A MESSAGE FROM THE LAKE MANAGEMENT DISTRICT



From the desk of...

DAVE BITTER, CHAIRMAN | LAKE BEULAH MGMT DISTRICT

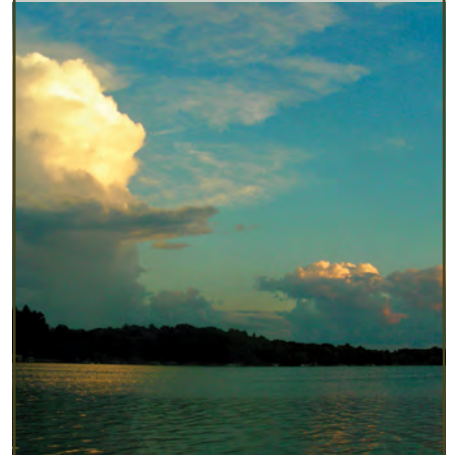
The lake management district is pretty quiet this time of year. No word on any decision regarding the Hotel Beulah issue. Double D's has been torn down, but there is no official word on what will happen there, though there is no end of rumors on the subject.

Just like everyone else, we are looking forward to summer and all of the summer activities. Our harvesting equipment is ready and waiting for the plants to grow. The District is looking for an additional equipment operator, so if anyone knows of someone who would like to spend the summer riding around on Lake Beulah, call the hot line, 262-363-5359 or email us.

Things will get busy soon with the warm sun, boating activity and the usual challenges, so stay in touch by attending our monthly meeting. Check our website at lbmd.org and you can find out when we meet. Our usual date is the third Tuesday of the month at 5:30 PM, but it does change from time to time. We'll also will let you know of important news by our direct email program. If you haven't already given us your email address, do it now by going to our website at lbmd.org and fill out contact information sheet so we can add you to the list.

Looking forward to a great summer of 2023!

Look at the Sky!



When it comes to scenery photos, the sky can add some real drama to an image. Sunsets and sunrises are popular subjects, but clouds can also be really eye-catching.

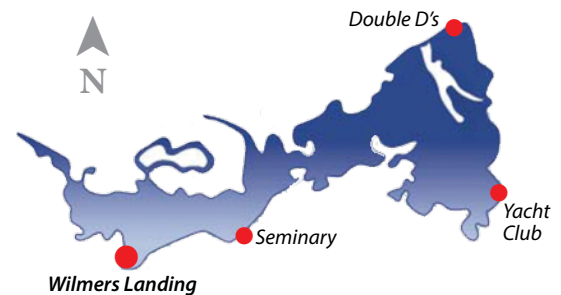
Our website has a whole section with amazing sky shots. What about you? Do you have any you'd like to share?

Send your images to www.ProtectLakeBeulah.org

Emergencies

Please use courtesy and common sense in operating your watercraft, ATV's, snowmobiles. Avoid creating a hazard, threat, stress, or irritant to others and yourself, to wildlife and to the lake environment. Respect others by turning down the volume of music or other amplification.

You can report situations to the Town of East Troy Police on the lake or call their non-emergency number: **(262) 642-3700**.



For all EMERGENCIES: DIAL 911
Identify LAKE BEULAH and ACCESS POINT (see map)

Try to provide the police with as much information as possible such as boat type, color, number of occupants, location where observed, and registration number. Note: when on the lake the Police also monitor the emergency Marine Channel **VHF CH72**.

NEED EXTRA COPIES OF LAKE VIEWS?

If your lake property is among those having multiple owners, you can request additional copies of *Lake Views*, the official publication of your LBPIA. Send your written request to the LBPIA at LakeBeulah.LakeViews.Editor@gmail.com

Area Chair Network

Area Chairpersons are committed Lake Beulah residents who serve as the primary contacts to the Association. They are your friends and neighbors, familiar faces who understand the issues surrounding your community. Should you have an interest or concern regarding the lake, please reach out to your area chair or a member of the board through ProtectLakeBeulah.org.

Check (✓) YOUR Area Chairperson:

- Beach Road - David Scheel
- Beulah Heights Road (W2002-W1900) & Bakavi Way - Maureen & Tim McCarthy
- Beulah Heights Road (up to W2002) - Eric Tarman-Ramcheck
- Beulah Park Road - Dave & Peggy Krueger
- Byrnes Lane & Romadka Park Road - Roy Gerloff
- Country Club Lane & Austin Road - Frank Davenport
- East Shore Road (Beach Rd to North end of Beulah Park Rd) & Deerpath - Debra Dunn
- East Shore Road, Thistle Lane, Marsh Road, Millsite Road & Hwy J - Wendy Bitter
- Golden Beach Road & Island Drive - Kim Rosenmayer
- Horseshoe Lane & East Shore Road (to Beulah Park Road) - Wendy Sievert
- Kings Parkway & Kings Lane - Chrissy Kubicek
- Lake Road & Windy Way - John & Susan Brown
- Oakwood Lane & Its A little Road - Don Stein
- Pastime Lane & Grandview Drive - John Plant
- South Shore Drive (to Humphrey Lane) - Norm & Rose Sass
- South Shore Drive (West of and including Humphrey Lane) - Carrie Franzene
- Stringers Bridge Road & New Deal Avenue - Michol Ford
- West Bay Road - Jessica Dunn Jones
- Wilmer's Grove Road, Wilmers Point Lane & Wilmers Landing - Lucy Atac

Board of Directors

Serving on a voluntary basis, the Board of Directors are elected by the LBPIA membership. Board terms are three years; board members can serve a maximum of three terms (nine years).

Tom VanDenBogart
President / Fish, Game & Wildlife

Brian Bellew
Vice President

Kim Rosenmayer
Secretary

Steve Huening
Treasurer

Jennifer Thorsch
Water Quality

Jim Blomberg
Website

Debra Dunn
Marketing & Membership

Steve Schmitendorf
Membership Communications

Tom Bernhardt
Lake Views Newsletter Editor

Lake Views is published periodically by the Lake Beulah Protective & Improvement Association. Every effort has been made to provide correct and accurate information. There is, however, no guarantee as to the total accuracy of information included. The opinions expressed are not necessarily those of the LBPIA Board of Directors. Individuals who wish to submit articles, artwork, poetry, calendar items or photography may send contributions to LakeBeulah.LakeViews.Editor@gmail.com. Articles in *Lake Views* may be reprinted or reproduced for further distribution, with acknowledgment to the Editor.

▶ IN THE NEXT ISSUE

Lake Views will be published again in the fall. What do you want to read about? Send your ideas to the *Lake Views* editor at LakeBeulah.LakeViews.Editor@gmail.com



Lake Beulah
Protective and Improvement Association
Established 1894
P.O. Box 153 East Troy, WI 53120

FIRST-CLASS MAIL
U.S. POSTAGE
PAID
MILWAUKEE, WI
PERMIT NO. 3707

Return Service Requested



Follow Us on Facebook and Instagram

THE LBPIA FINDS STRENGTH IN ITS MEMBERS!... THAT'S YOU!

PLEASE JOIN US AT THE SPRING MEETING
SATURDAY, MAY 13, 2023 @ 9:00 AM
EAST TROY TOWN HALL

FEATURING: Panel discussion with LBPIA partner organizations/camps - working together for Lake Beulah



Come early to our meetings for the best seats.

Come with your questions and to find out more about:

- Goose Poop Mitigation
- Hotel situation
- Water quality
- Fish stocking
- Double D's
- Lake Beulah Country Club
- ANYTHING you're wanting to know about our beloved Lake Beulah

***Coffee, orange juice
and donuts
will be available!***

www.protectlakebeulah.org