

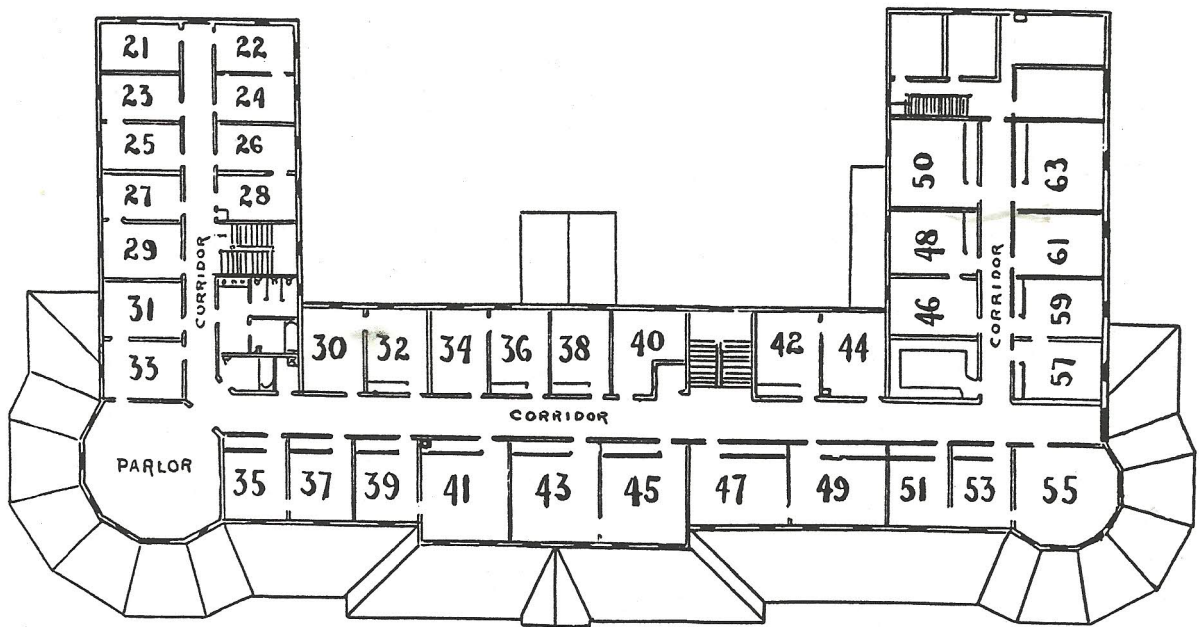
SEASON 1899
OPENS MAY 25

Hotel Beulah



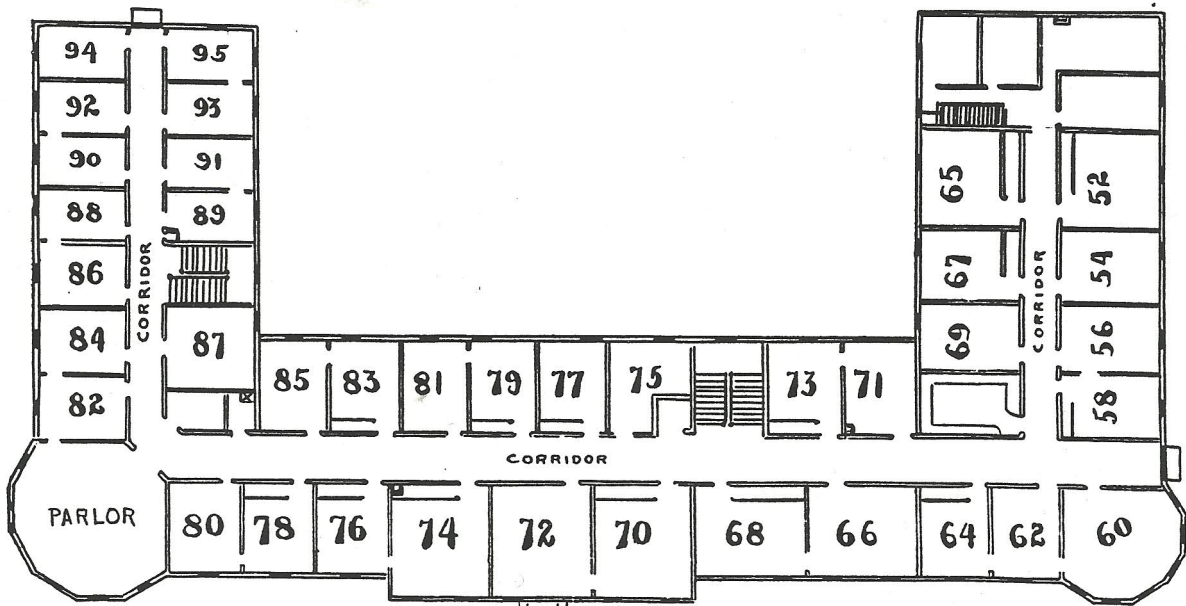
JOHN PORTER
PROPRIETOR

LAKE BEULAH, WIS.



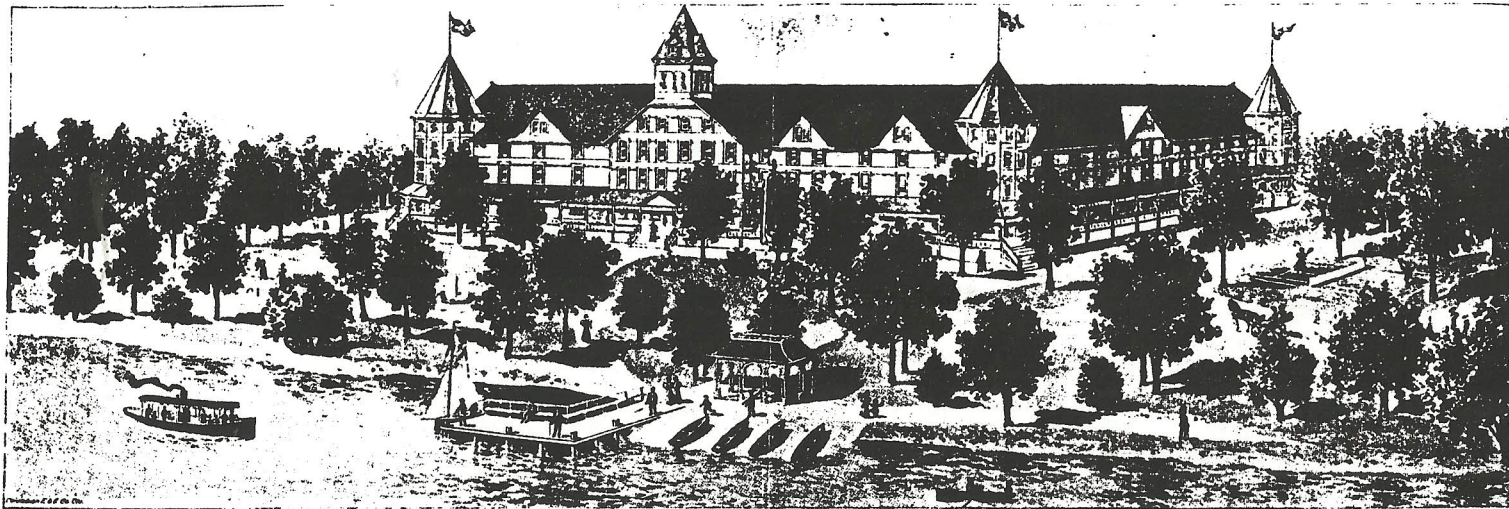
PLAN OF SECOND FLOOR.

This floor is given up entirely to Bedrooms arranged singly and en suite, including a large Parlor and Toilet Rooms.



PLAN OF THIRD FLOOR.

This floor is planned similarly to the second floor on the preceding page, and contains a larger number of Bedrooms arranged singly and en suite.



LAKE BEULAH

HIGHTY-FOUR miles from Chicago on the main line of the Wisconsin Central Railroad is the station of Lake Beulah, at which the tourist lands in the midst of one of the most delightful summer resort regions of Wisconsin.

Twenty minutes' drive from this station, over a rambling country road, leading over the brow of a gently rising hill commanding an extensive prospect of gently rolling country dotted with well kept farms bring the traveler to this famous little lake which may be seen from a distance nestled down among the hills.

Lake Beulah, formerly called Crooked Lake, is noted for its winding and picturesque shores. It is about four miles long, and from half a mile to a mile and a half in width. Its abrupt shores are carpeted with grass and shaded by lofty and beautiful trees, whose foliage is mirrored in the lake's clear depths. It abounds in rocky dells by wandering streams and lonely pools, which impress the city toiler seeking rest for his tired nerves with an agreeable air of wildness and solitude.

In altitude this lake is two hundred feet above the level of Lake Michigan, and is fed entirely by springs, some of which are noted for their great curative qualities. The air is delightfully invigorating and healthful, while the drives in every direction are full of charm and interest. Owing to its ease of access, this lake has become a very popular summer resort for wealthy citizens of Chicago, Milwaukee and Waukesha, who have built expensive and attractive summer homes on its beautiful shores.

FISHING.

This lake has been opened only within the past few years, and has been annually stocked with Black Bass. It is therefore one of the best fishing bodies of water remaining within easy distance of our cities. Black Bass are caught in large numbers, and they are of the largest kind, many of them weighing as high as seven pounds. Pike, Pickerel, Silver, Oswego and Rock Bass abound in large numbers. The water supply is furnished from springs, and the fish are naturally gamey, healthy and hard. Most charming and lovely spots for luncheon parties to enjoy a day in the woods under massive oak, elm and maple trees are to be found in all directions.

HOTEL BEULAH

The new Hotel Beulah, which was thrown open to the public June 29, 1897, is complete in every particular, and has accommodations for five hundred guests. It rises majestically from beautiful grounds on one of the most attractive points of the lake shore overlooking the water, from which can be obtained an exquisite view of the picturesque scenery.

The interior of the building has been planned and arranged with the utmost care and forethought, and contains every modern convenience for the accommodation and comfort of guests, which experience has been able to suggest.

The chambers are large and airy. Many of them are provided with large closets, and a large number can be arranged if desired, in suites of two and three. Each floor is provided with Parlors, Bath Rooms, Water Closets and Lavatories convenient of access from each room. The building is planned so that every room in the house has a pleasant exposure and opens on a wide corridor.

On the first floor opening from the veranda through the main entrance may be found the office which is large and spacious, and intersected by the main corridor leading on one side to the Dining Room and on the other to the Reception Room, Parlors, Writing Room and Ball Room.

The Ball Room, which is also designed to be used as a hall, is about forty feet square, and will seat a large audience. It has a fine dancing floor and its convenience of access will be appreciated by the ladies who can reach it from their rooms without going outside the hotel.

The furnishings throughout are new, elegant and tasteful. Both Hotel and Grounds are Lighted with Electric Lights.

The most important feature of the summer hotel, the dining room, is a spacious apartment, forty-five by sixty-five feet, overlooking the lake. The dining-room service will receive, as in former years, the most careful study and attention, and guests will be supplied throughout the season with the best of fresh meats. A special feature of this service will be the cream, milk, butter and vegetables furnished by the farm connected with the hotel and controlled by its management.

No description of Hotel Beulah would be complete without mention of the Artesian Mineral Spring Water with which it is abundantly supplied, and whose health giving qualities can be amply testified to by many hundreds of guests, who have annually returned to enjoy its benefits.

Surrounding the hotel is an ample veranda solidly roofed and substantially floored fourteen feet wide and over three hundred feet in length.

A long distance telephone in the hotel office, by which direct communication can be had with Lake Beulah Station, Milwaukee, Waukesha and Chicago, and in fact with any city within speaking distance, connects this resort closely with the outside world.

AMUSEMENTS AT LAKE BEULAH.

Ample provision is made at Hotel Beulah for the entertainment of guests of all ages.

Carriages and horses are provided for those who enjoy driving or riding. The hotel livery stable is a fine large establishment within easy call of the hotel. The excellent roads in this part of the country enable one to drive to Milwaukee, Waukesha, Lake Geneva, Elkhorn, and many other interesting points within two to three hours; in fact, the whole region abounds with charming scenery and places of interest to tourists of every class—to the antiquarian, scientist, artist, sportsman, invalid, pleasure seeker, and especially the bicyclist. Guests having a preference for the bicycle as a means of conveyance will appreciate the bicycle storage room which has been provided in the basement of the hotel for their accommodation.

Boats of every description are provided for those who are disposed to row or sail on the placid waters of the lake, many being added this season. Picnic parties from the hotel frequently use this pleasant means of conveyance to reach the many picturesque and charming spots about the lake, from which can be obtained the best views, and among which can be spent many days of delightful recreation and enjoyment.

For those inclined to cultivate the social side of summer life, the spacious ball-room with its fine floor for dancing will prove an attraction. A good orchestra will furnish music throughout the season, and as the hotel is a center of attraction for the many young people stopping at the summer homes about the lake, these social functions have become very popular.

Concerts—both vocal and instrumental—and entertainments at which pleasing programs will be rendered, will occur at frequent intervals.

For the children Lake Beulah is a veritable paradise. Without going beyond the call of their parents, they can find amusement on the grass-carpeted lawn beneath the shade of the lofty trees with which the hotel is surrounded. In the evening or during rainy weather they can enjoy themselves in the great parlors or the ball room, or on the spacious veranda. The orchestra is often at their disposal, and children's dances are of frequent occurrence.

Those having inclinations for athletic exercises will find opportunities for enjoyment in the tennis courts or base-ball grounds attached to the hotel property, or in the fine new bowling alley or billiard-room in the hotel proper.

No list of amusements at this popular lake resort would be complete without mention of the bathing, which, judging from former seasons, seems to be one of the most attractive forms of recreation with both old and young, without regard to sex. Hotel Beulah has the finest bathing beach in the northwest, amply provided with modern bath houses for the accommodation of guests.

ACCOMMODATIONS SHOULD BE SECURED IN ADVANCE.

All letters of inquiry will receive prompt attention, and all desired information will be given. For further particulars address

JOHN PORTER, PROPRIETOR,
Lake Beulah, Wis.

MINERAL SPRINGS.

Hotel Beulah has several of the finest Mineral Springs to be found in Wisconsin. The following is an analysis of the water:

OFFICE OF
COLBERT CHEMICAL CO.,
IMPORTING AND MANUFACTURING CHEMISTS.
No. 60 Dearborn Street.

CHICAGO, March 2, 1893.

HOTEL BEULAH SPRINGS CO., Lake Beulah, Wis.

GENTLEMEN:—I desire to report to you the chemical analysis which I have made of the sample of water taken from the Lake Beulah Springs, February 18, 1893, as follows:

Kali. Sulfuric	0.296	Calc. Carbon	1.333
Natri. Sulfuric	0.946	Stront "	0.222
Natri. Chlorat	1.107	Ferri "	0.036
Natri. Carbon	1.151	Alum Phosphor	0.006
Lith. "	1.013	Acid Silic	0.338
Magn. "	1.861	Acid Carbon	

In my opinion this water would prove very effective in all cases of nervous affections, especially insomnia, nervous dyspepsia, nervous debility, sick headache, etc. I would also recommend it highly as nature's own remedy for all forms of rheumatism and kidney and bladder troubles.

Respectfully yours,

PROF. T. F. COLBERT, Analytical Chemist.



RATES: \$ 2.00 to \$ 3.00 per day.
10.00 to 12.50 per week.

Children 10 years or under half rate.

For further information address

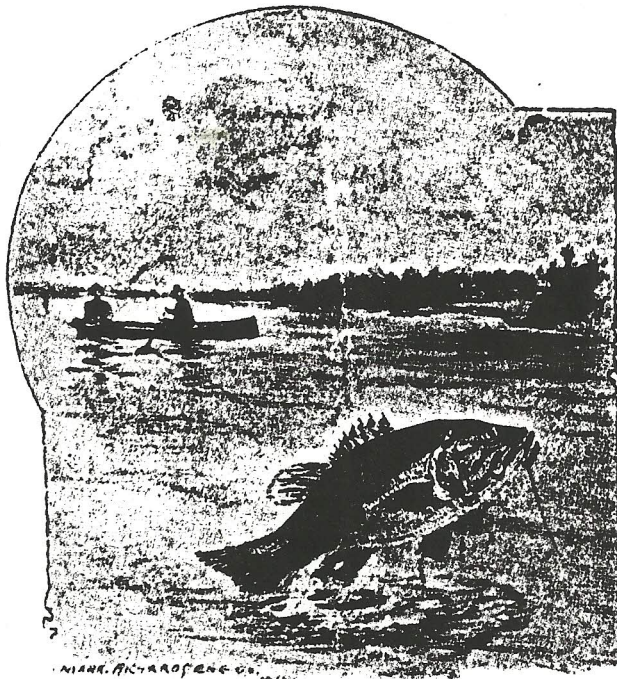
JOHN PORTER, Proprietor,
LAKE BEULAH, WIS.

REAL ESTATE.

Three nice summer residences are for sale at a bargain.

A few nice lots fronting on the Lake, suitable for the erection of summer cottages, are to be had at a reasonable price.

Also some acre property.



HOW TO GET THERE.

The station of Lake Beulah is on the main line of the Wisconsin Central R. R. It was built especially to accommodate the large number of people that now spend the summer at Hotel Beulah. All passenger trains on the Wisconsin Central R. R. stop at Lake Beulah, distant twenty minutes' ride from the hotel. On arrival, call for Hotel Beulah Bus Line. It meets all trains. Very low round trip excursion rates, good for the summer months, may be had of the Wisconsin Central R. R. upon application.

FROM MILWAUKEE.

Take electric car to Waukesha, then take Wisconsin Central R. R. to Lake Beulah, 14 miles. Car fare one way, 70 cts.

All letters of inquiry will receive prompt attention, and all desired information will be given. For further particulars address

JOHN PORTER, Proprietor,

LAKE BEULAH, WIS.

SUMMARY
Lake Use Report No. FX-7

BEULAH LAKE
Walworth County, Wisconsin

Physical Characteristics

Beulah Lake is a large, complex body of water located in the Town of East Troy, Walworth County, Wisconsin. It has a surface area of 834 acres, internal island acreage excluded, and a water volume of 14,279 acre-feet at a water elevation of 807.94 feet above mean sea level. Beulah Lake was originally five distinct lakes which were combined by the damming of the outlet stream in 1840. Within the tributary watershed, there are two other major lakes—Army and Booth; two lakes of less than 50 acres—Mud and Pickerel; an impoundment of about 20 acres; and several small ponds and seasonal pools. Basins within the lake range from 45 to 58 feet maximum depth.

The shoreline is extremely irregular, as is expected in impounded water. There are 11 small islands within the basin. Sand predominates along 20 percent of the shoreline, gravel and rubble cover about 55 percent, and soft sediments cover 25 percent.

Beulah Lake and other lakes upstream in the watershed are considered the origin of a significant tributary to the Mukwonago River. The outlet has negligible base flow; however, inlets to the lake exhibit perennial flow, and the difference may be due to evaporation of the lake surface.

Mud Lake and Pickerel Lake have distinct flowing outlets to Beulah Lake, as does the impoundment located on the headwaters of the inlet stream. An intermittent stream drains lowlands northwest of the lake to the central basin. The lake receives ground water from the east, west, and south. Water is discharged as surface runoff rather than recharging the ground water table.

The lake has medium fertility based on spring phosphate levels, high fertility based on alkalinity, and moderate fertility based on plant tissue analysis. The lake has a low pollutional hazard based on mean chloride content. Aquatic plant growth is luxuriant. A plant harvester is in operation on the lake during the summer, and chemicals have been used in the past for vegetation control.

The lake provides extensive spawning and nursery areas for bluegills and largemouth bass. These species comprise the major fishery at the present time.

The lake receives good concentrations of waterfowl in both spring and fall. The croplands set back from the lake and the marshy pockets bordering it provide necessary environmental niches for upland game birds and mammals. Deer utilize the timbered swampland near the inlet, as well as the swamplands connecting with Army Lake.

Steep wooded slopes constitute most of the shoreline. The exceptions are usually marshland corridors overlooked by high ridges. A small tamarack stand on the west shore at mid-lake presents an interesting contrast to surrounding hardwoods. Most shore dwellings are effectively concealed by trees. Great blue herons are commonly seen in the shallow marshy areas. The islands and irregular shoreline add to the diversity of this scenic lake.

Lake-Oriented Recreational Uses

Swimming opportunities exist at two commercial beaches, which accommodate perhaps 700 to 1,000 swimmers on weekends. There are no public beaches. The lake has adequate depths (more than 5 feet of water) over 73 percent of its basin to accommodate pleasure boating. It has two major open water areas of more than 200 acres, adequate for pleasure boating. The several narrow straits between basins are limits to unrestricted boating. Unfortunately, there is only one public launching site for transient boaters and it has limited parking. Beulah Lake can be described as having fairly high recreational value, with few physical limitations.